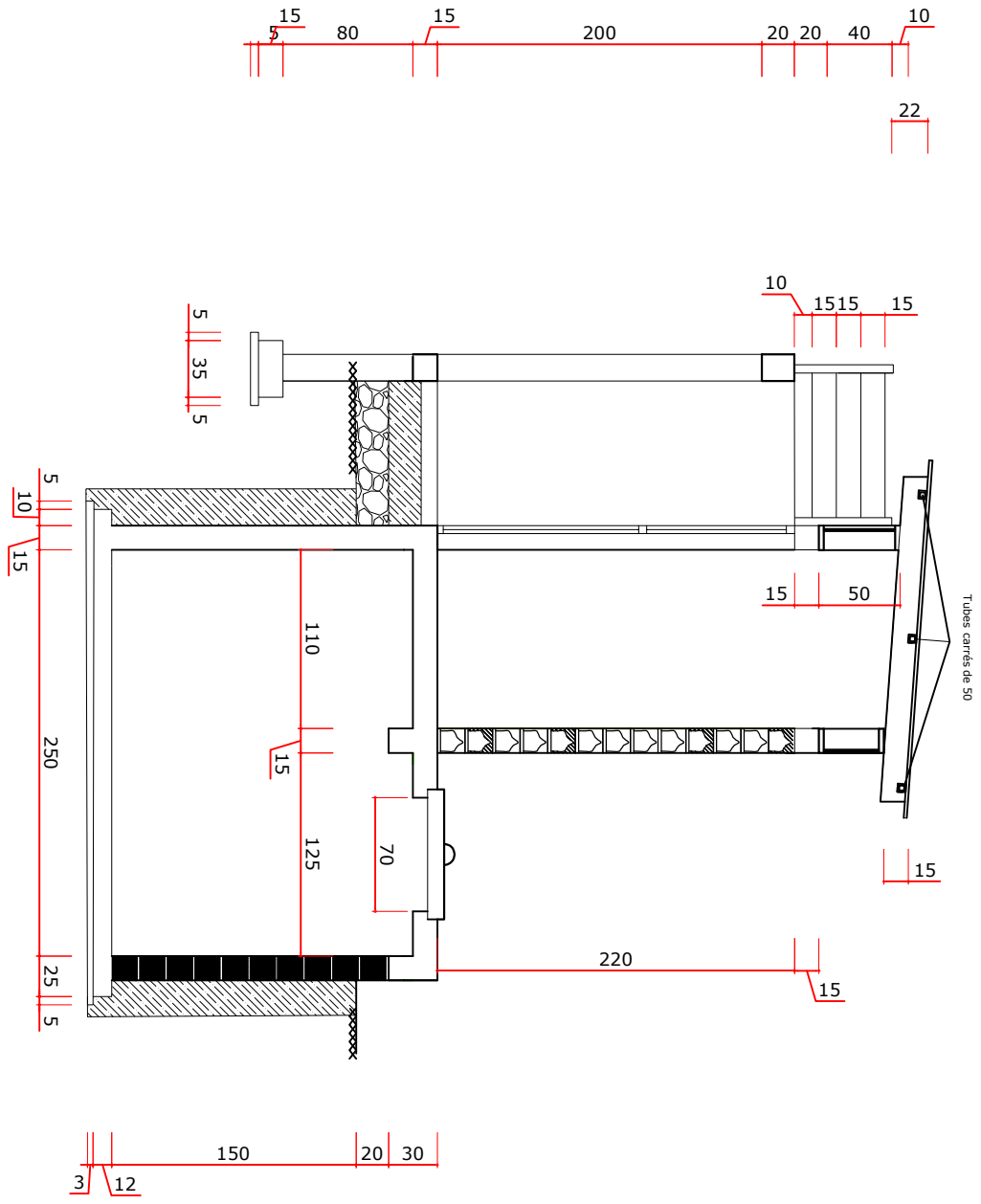
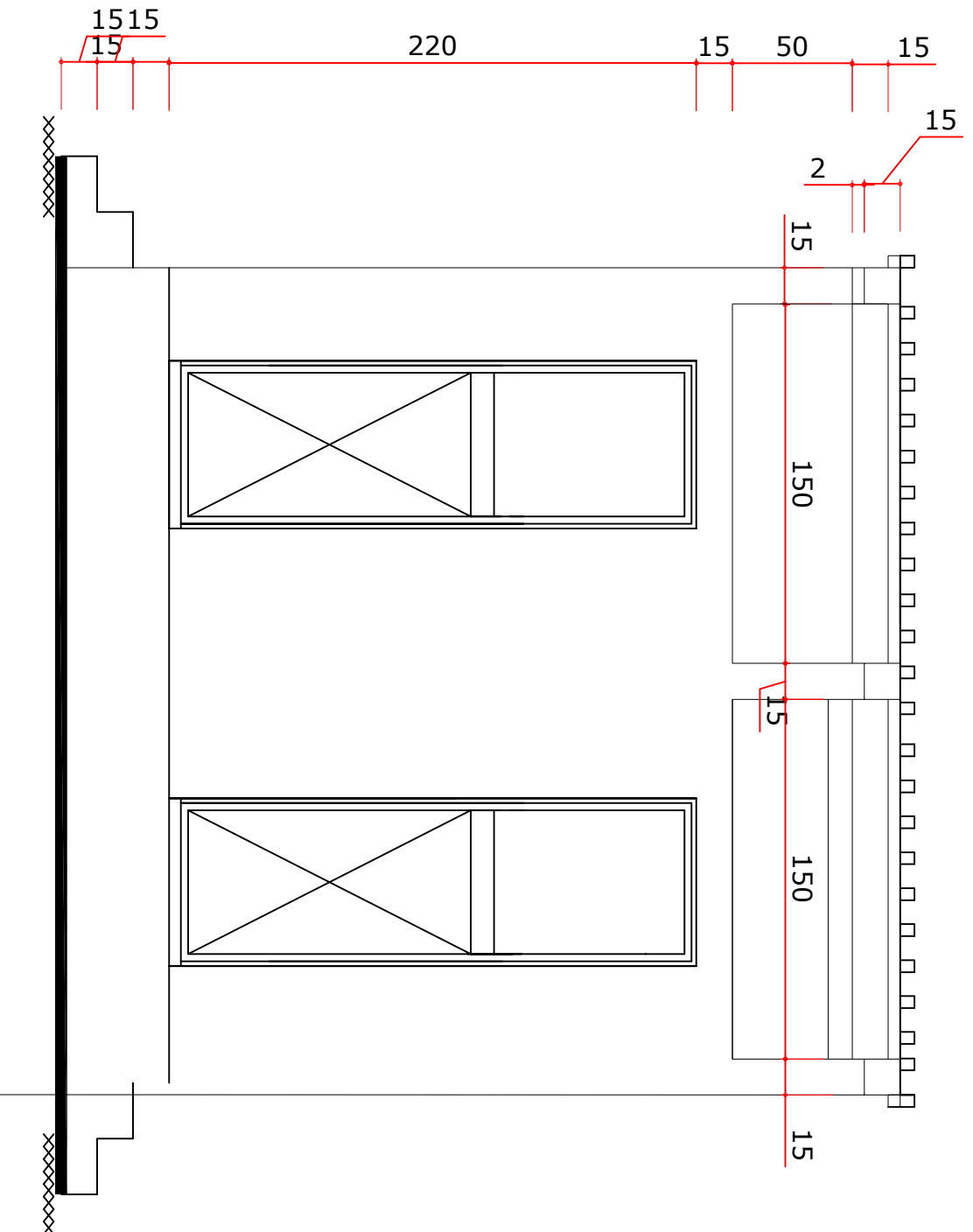


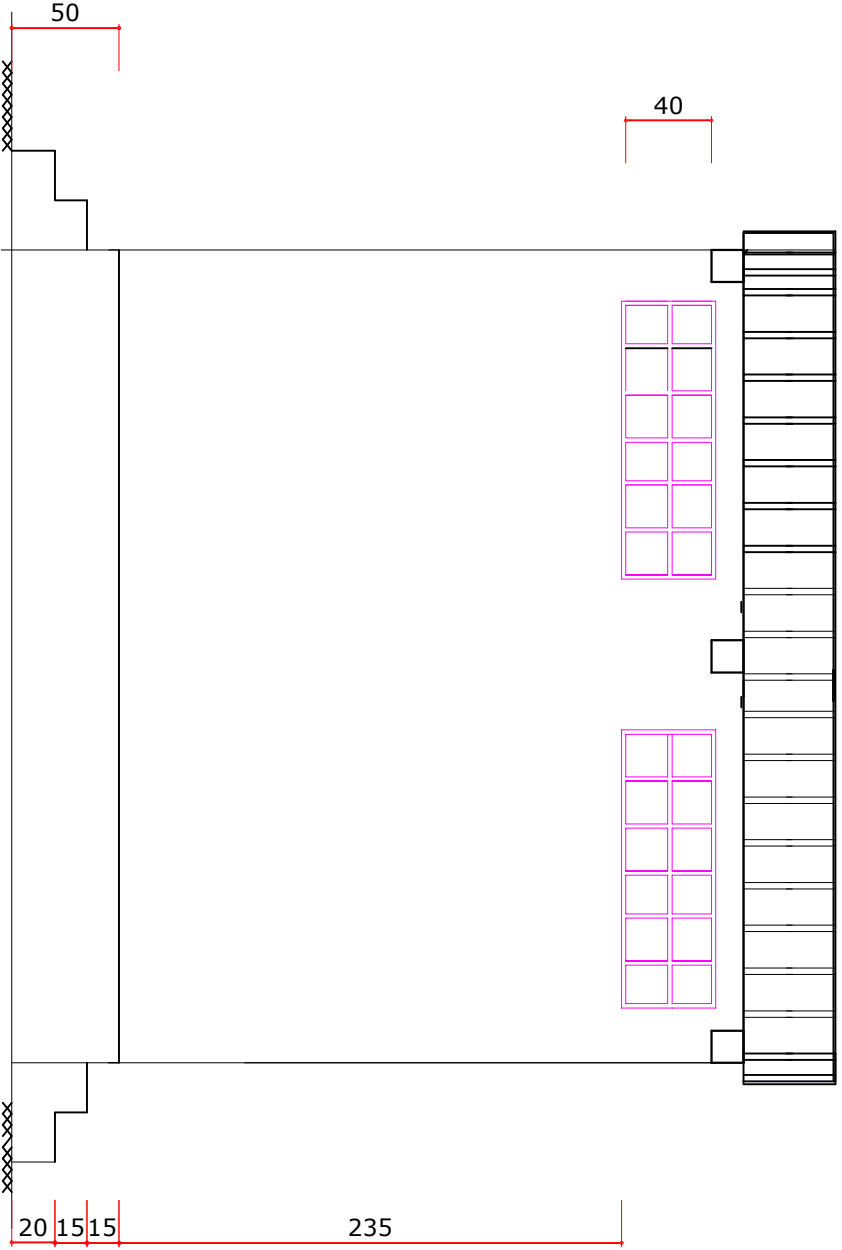
PLAN N° 01 - Coupe transversale

COUPE A-A

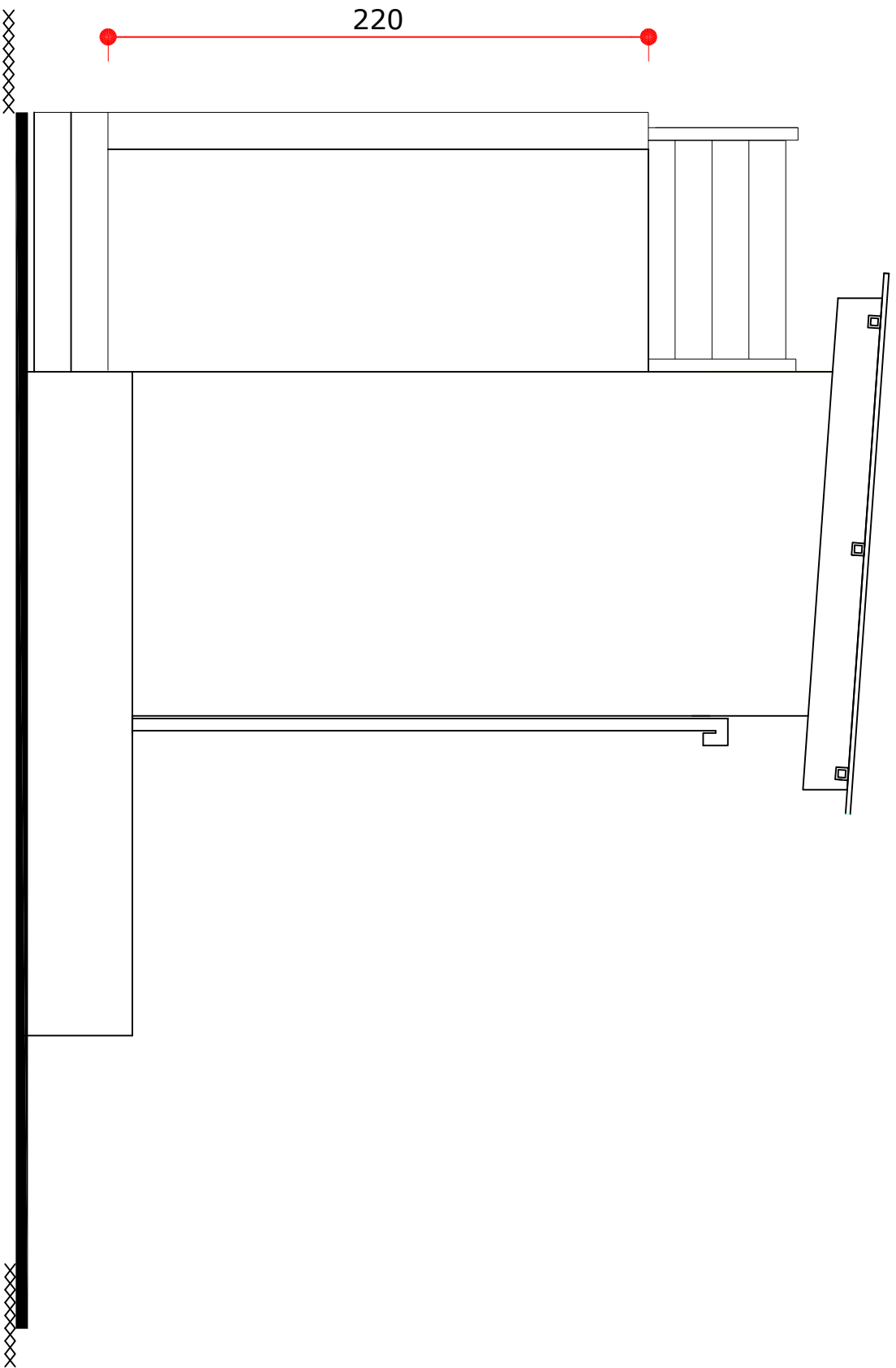




PLAN N° 02 LS-2
Latrines 02 cabines-Façade Principale

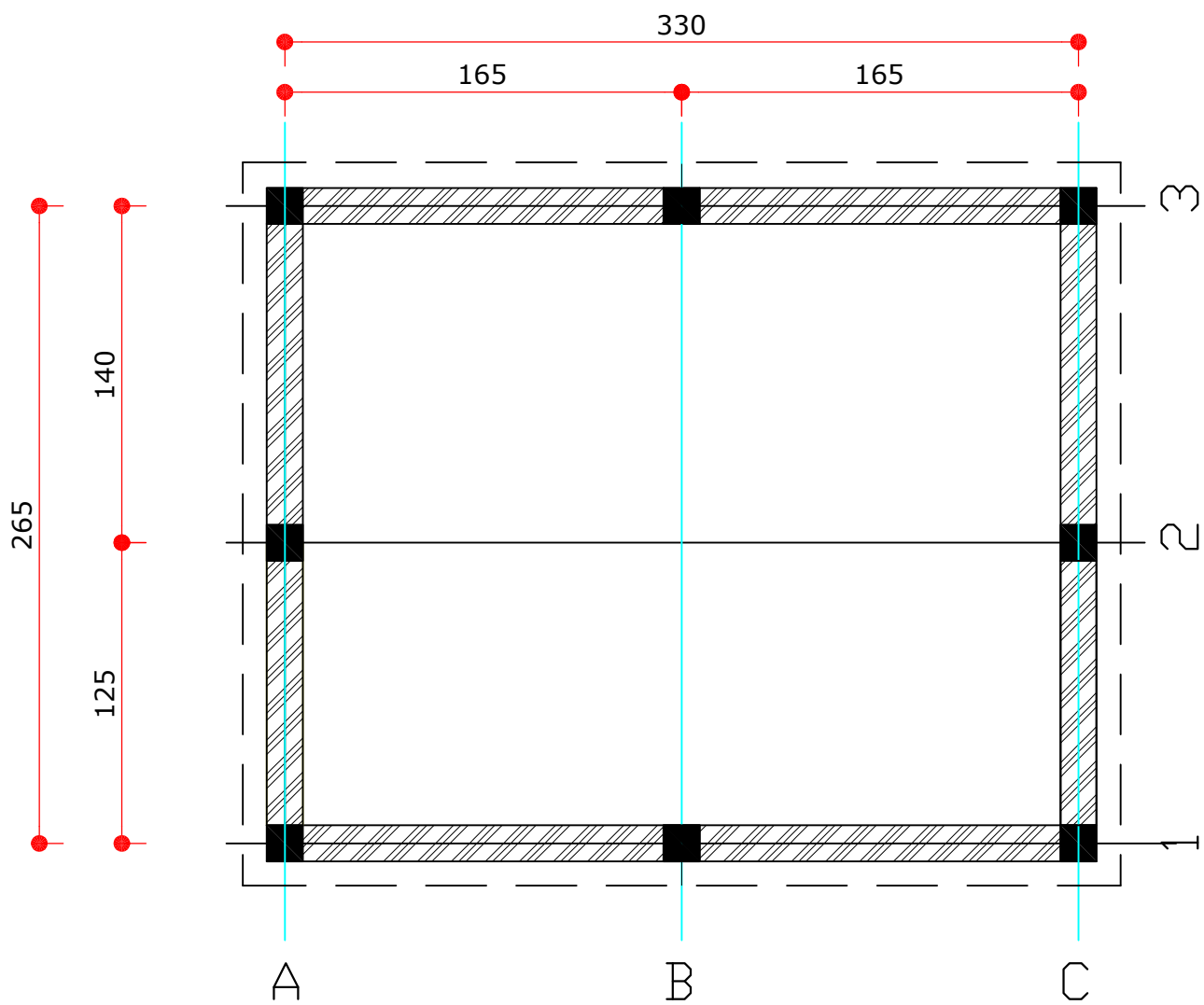


PLAN N° 03 LS-2
Latrines 02 cabines-Façade arrière



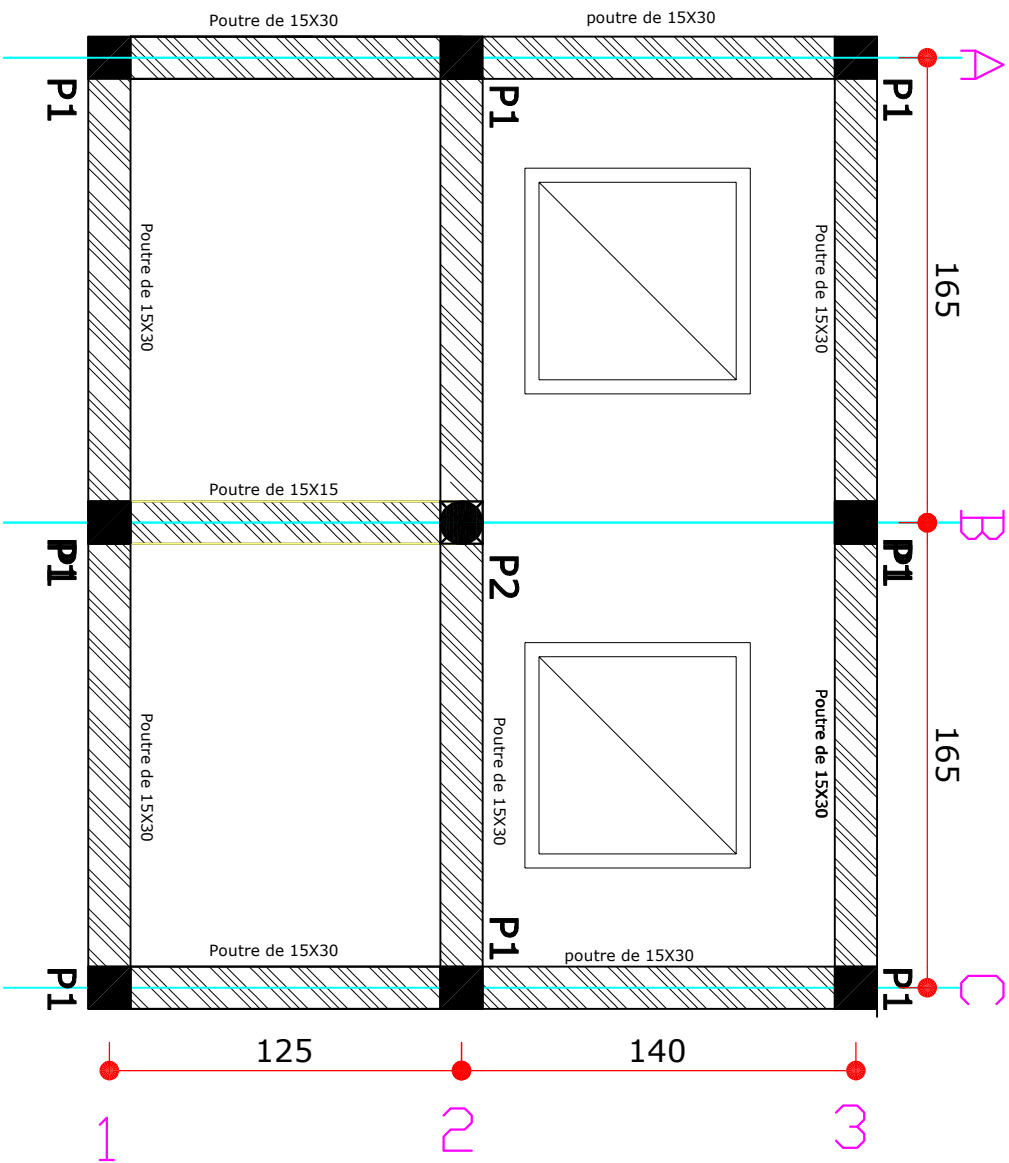
PLAN N° 04 LS-2

Latrines 02 cabines-Façade Latérale



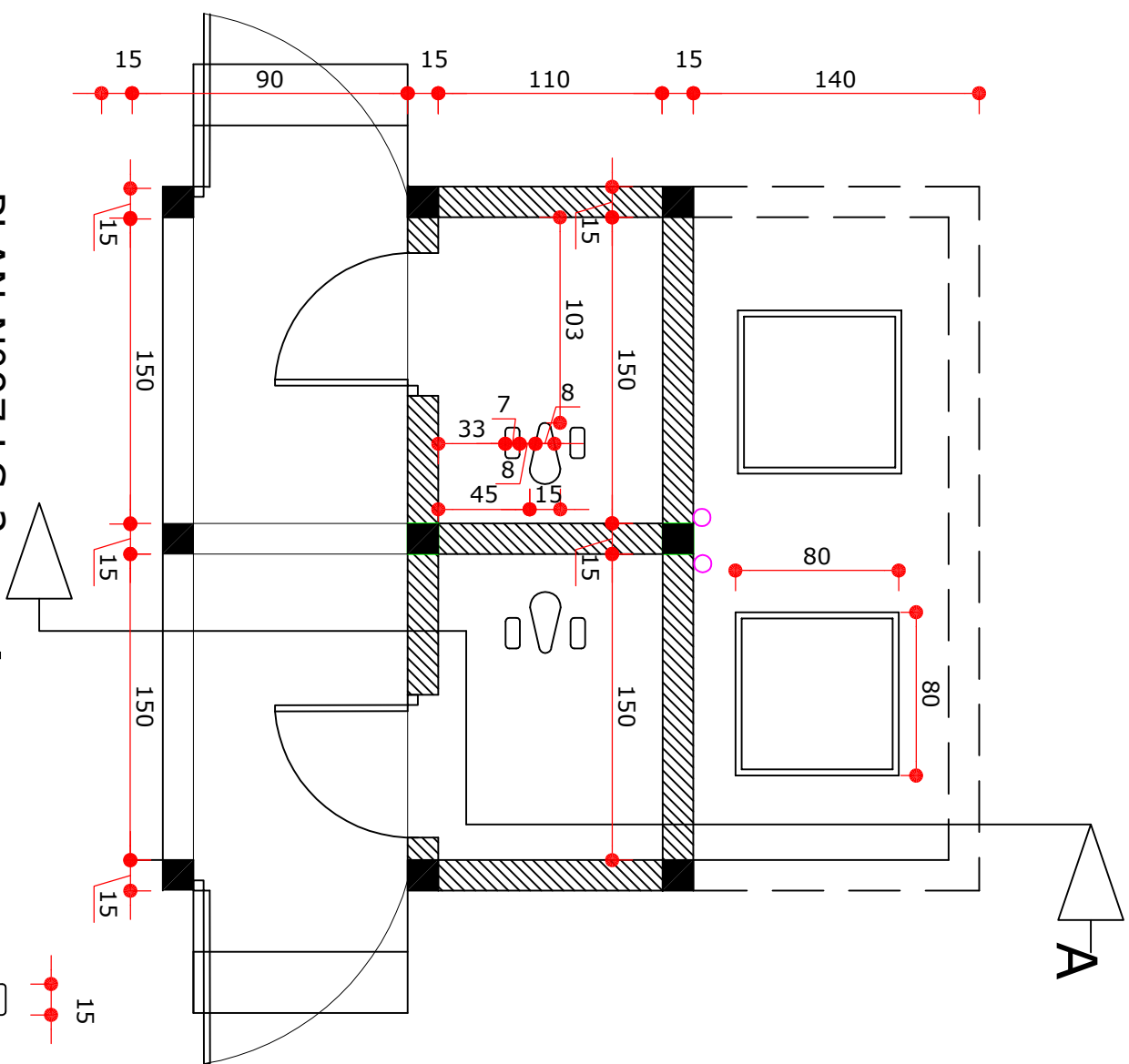
PLAN N° 05 LS-2

Latrines 02 cabines-plan de fondation

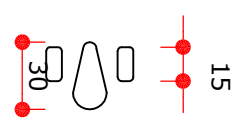


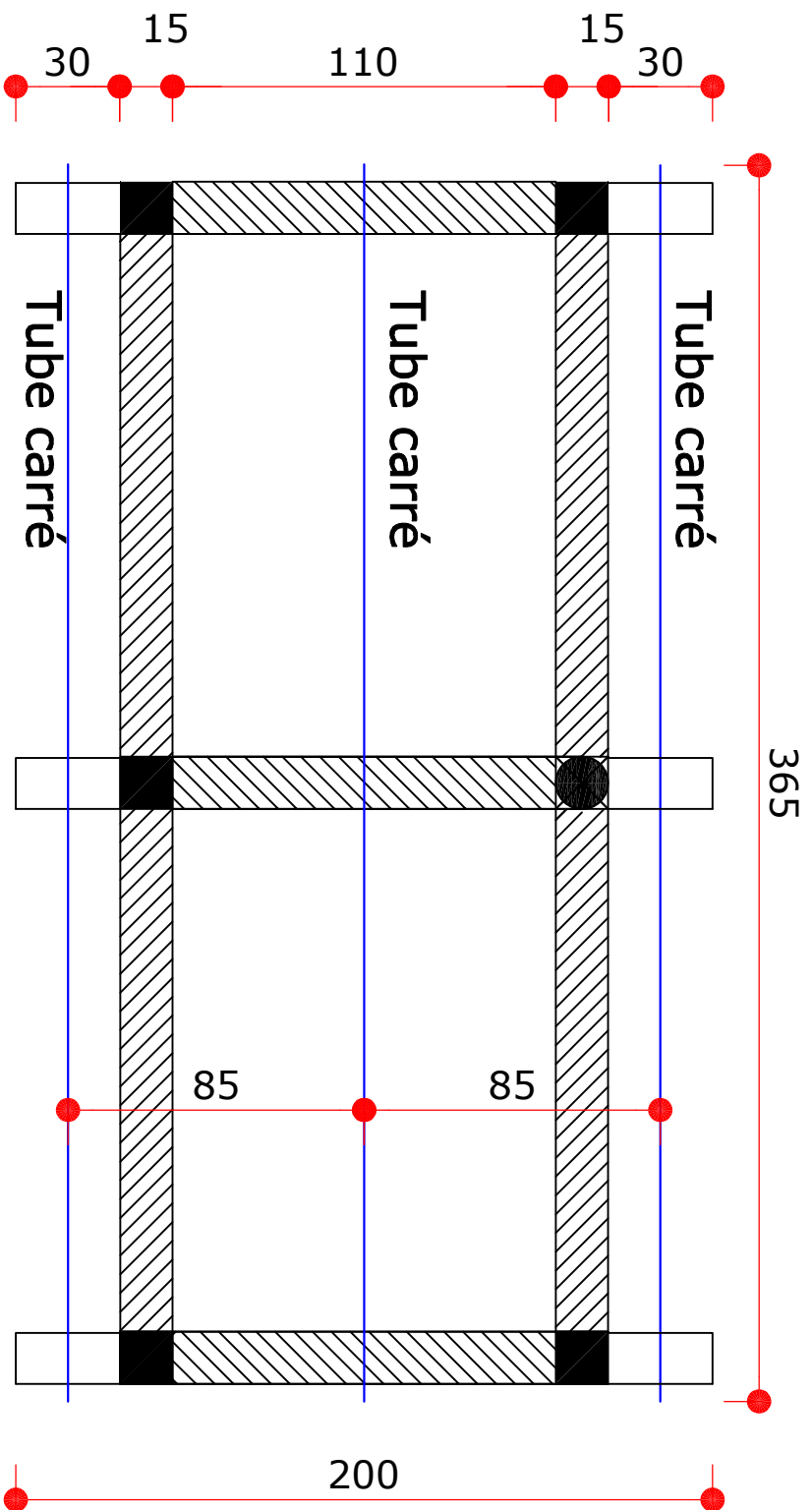
PLAN N°06 LS-2

Latrines 02 cabines-plan de coffrage dalle Superieure



PLAN N°07 LS-2
 Latrines 02 cabines-vue en plan



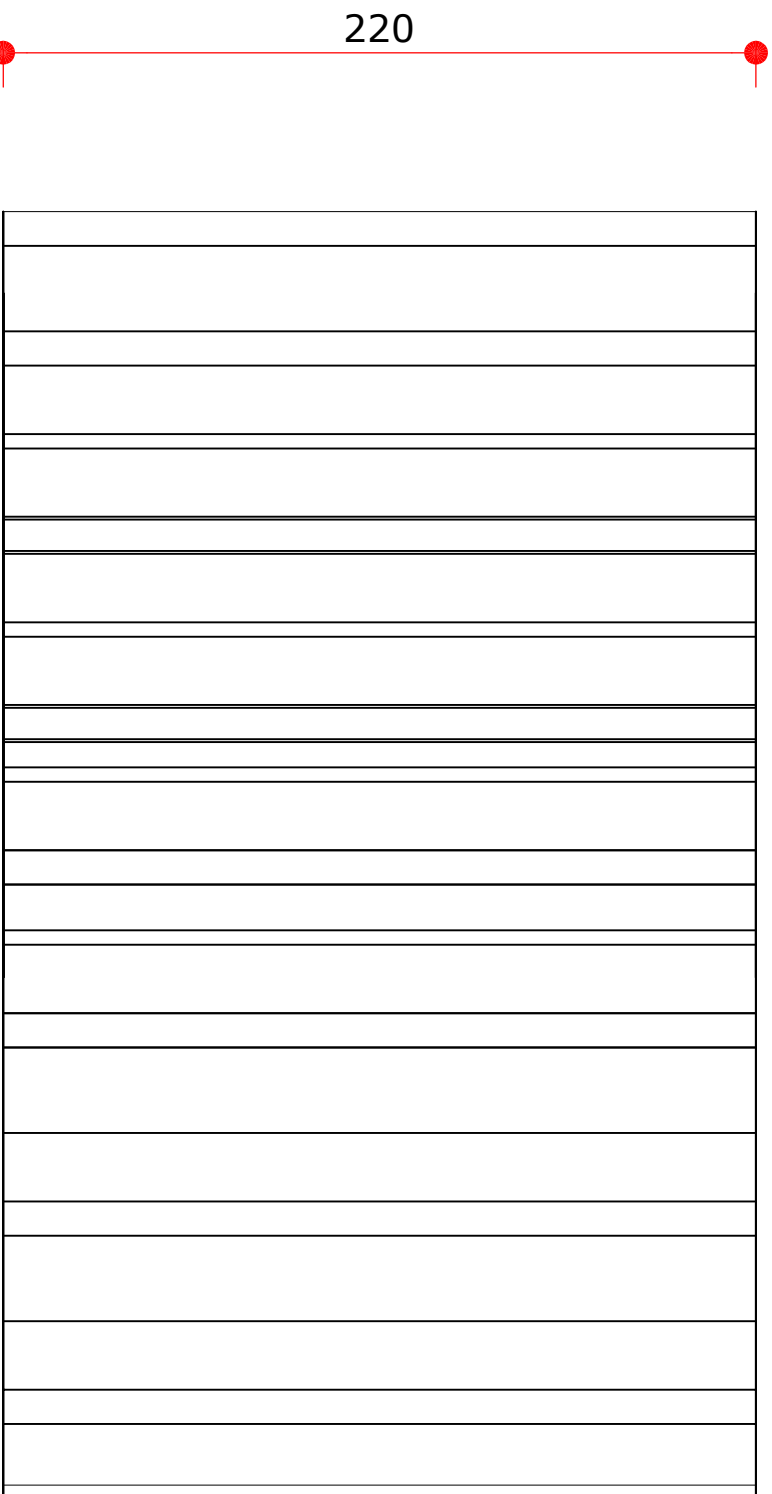


PLAN N° 08 LS-2

Latrines 02 cabines-plan de Charpente

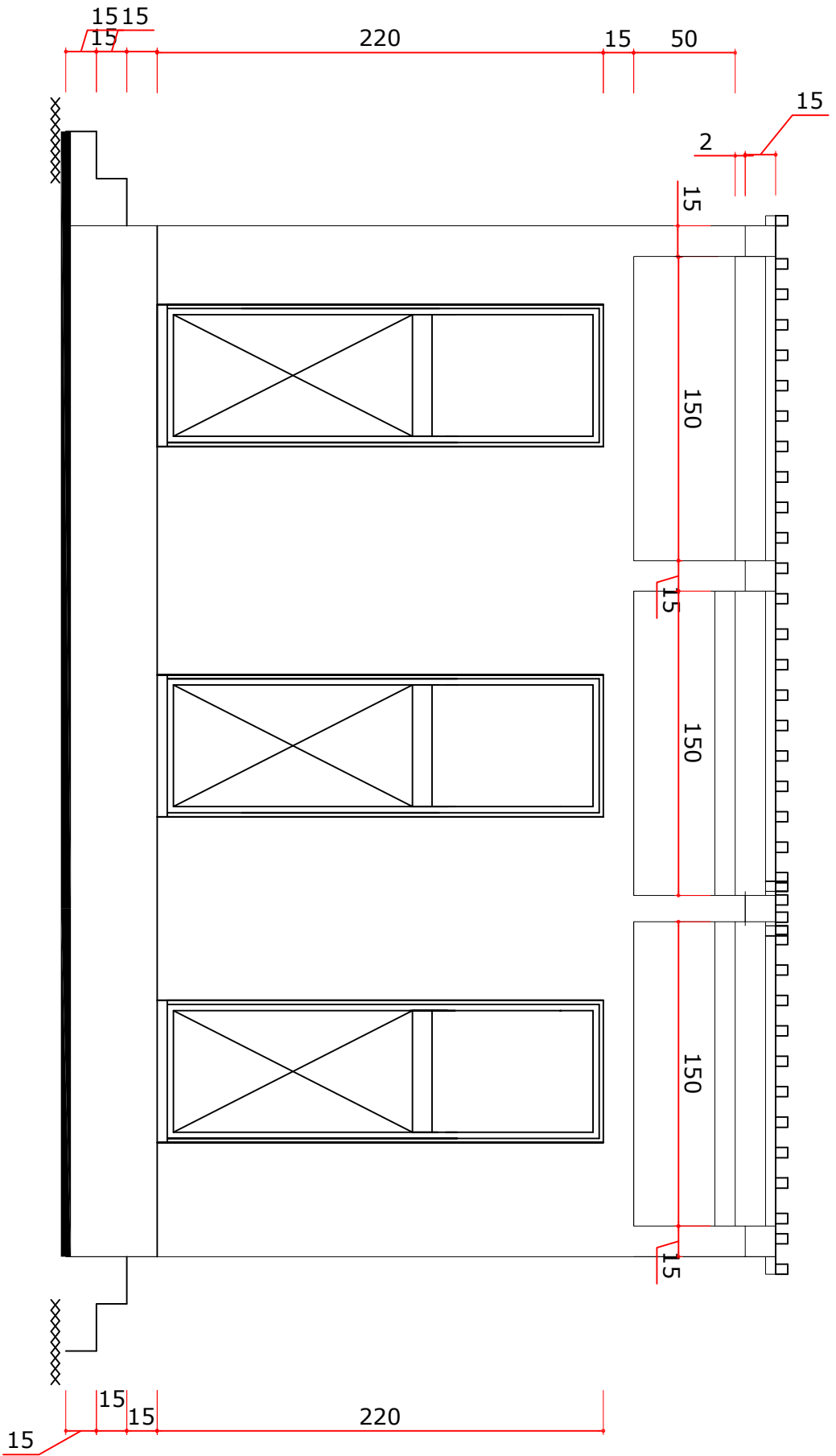


375

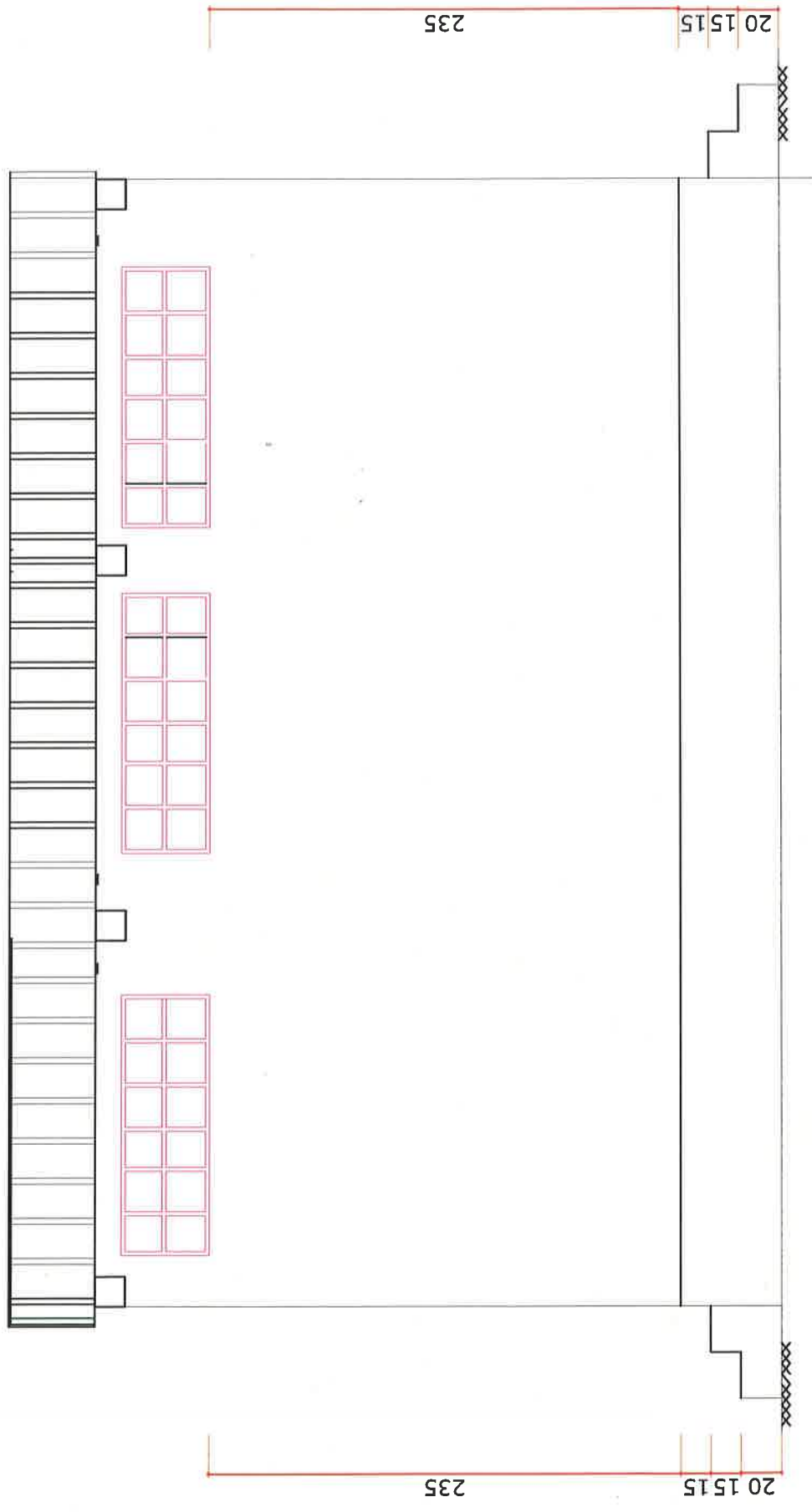


220

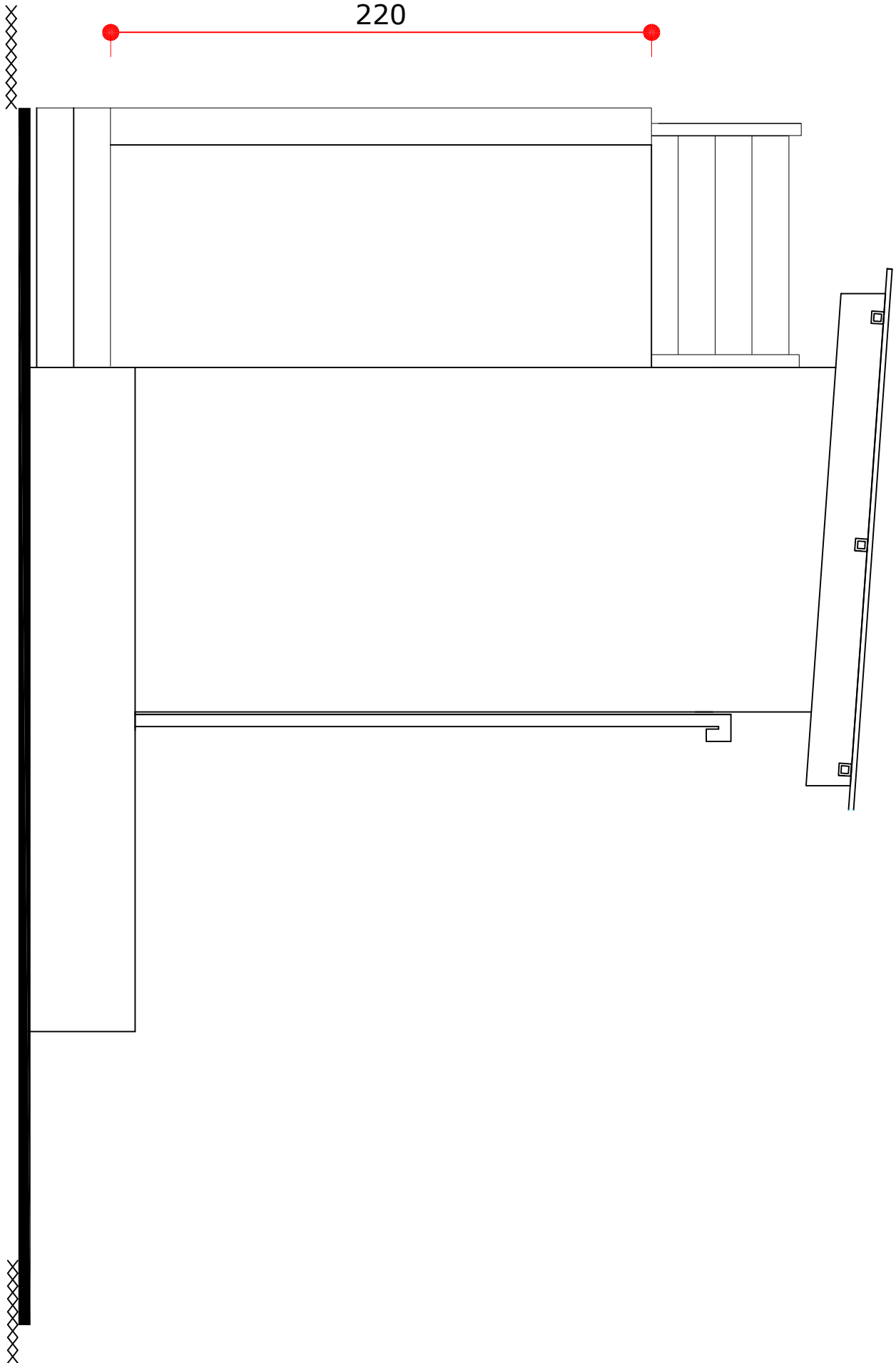
PLAN N°09 LS-2
Latrines 02 cabines-plan de Toiture



PLAN N° 10 LS-3
 Latrines 03 cabines-Façade Principale



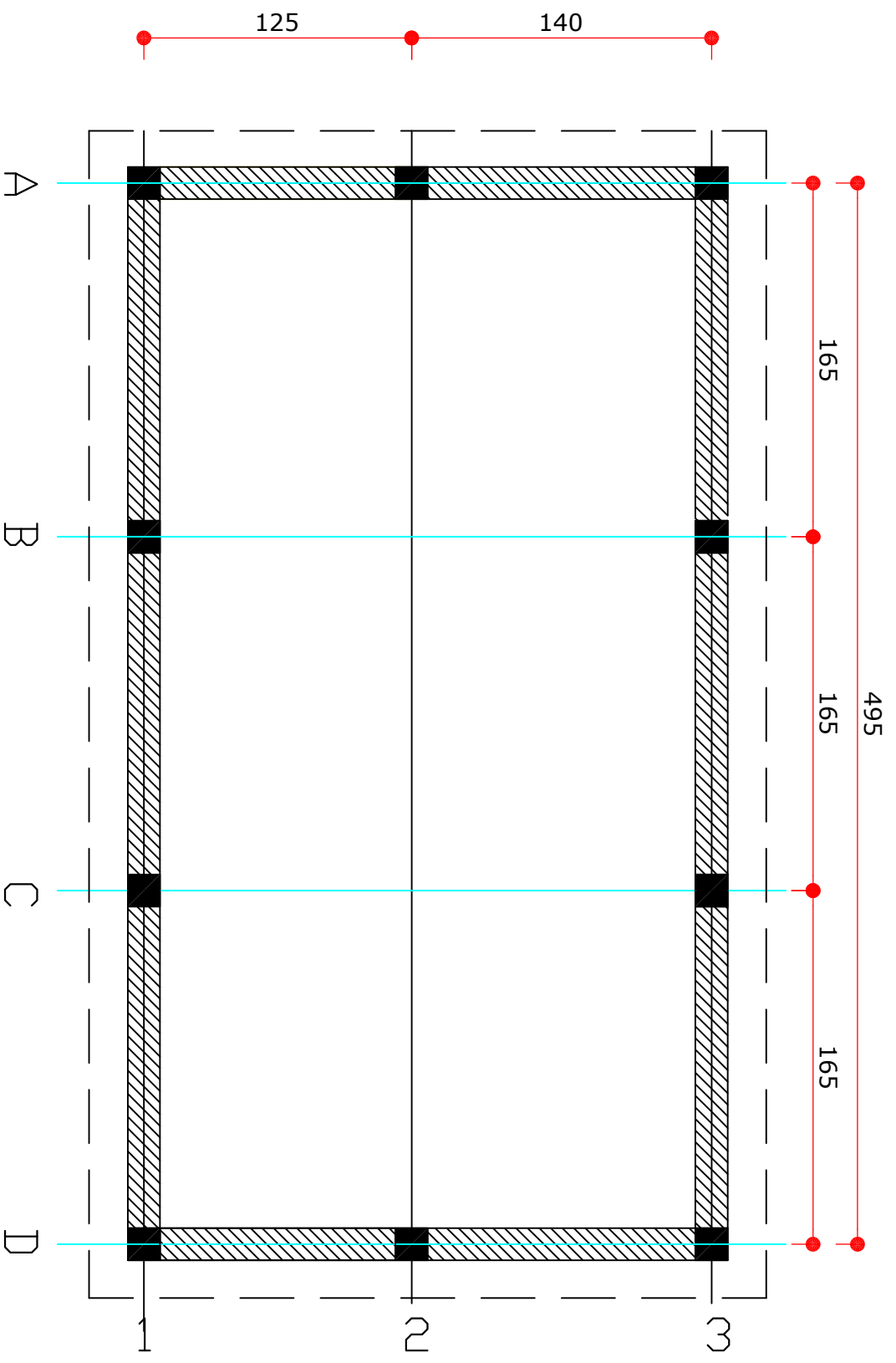
PLAN N° 11 LS-3
Latrines 03 cabines-Façade arrière



220

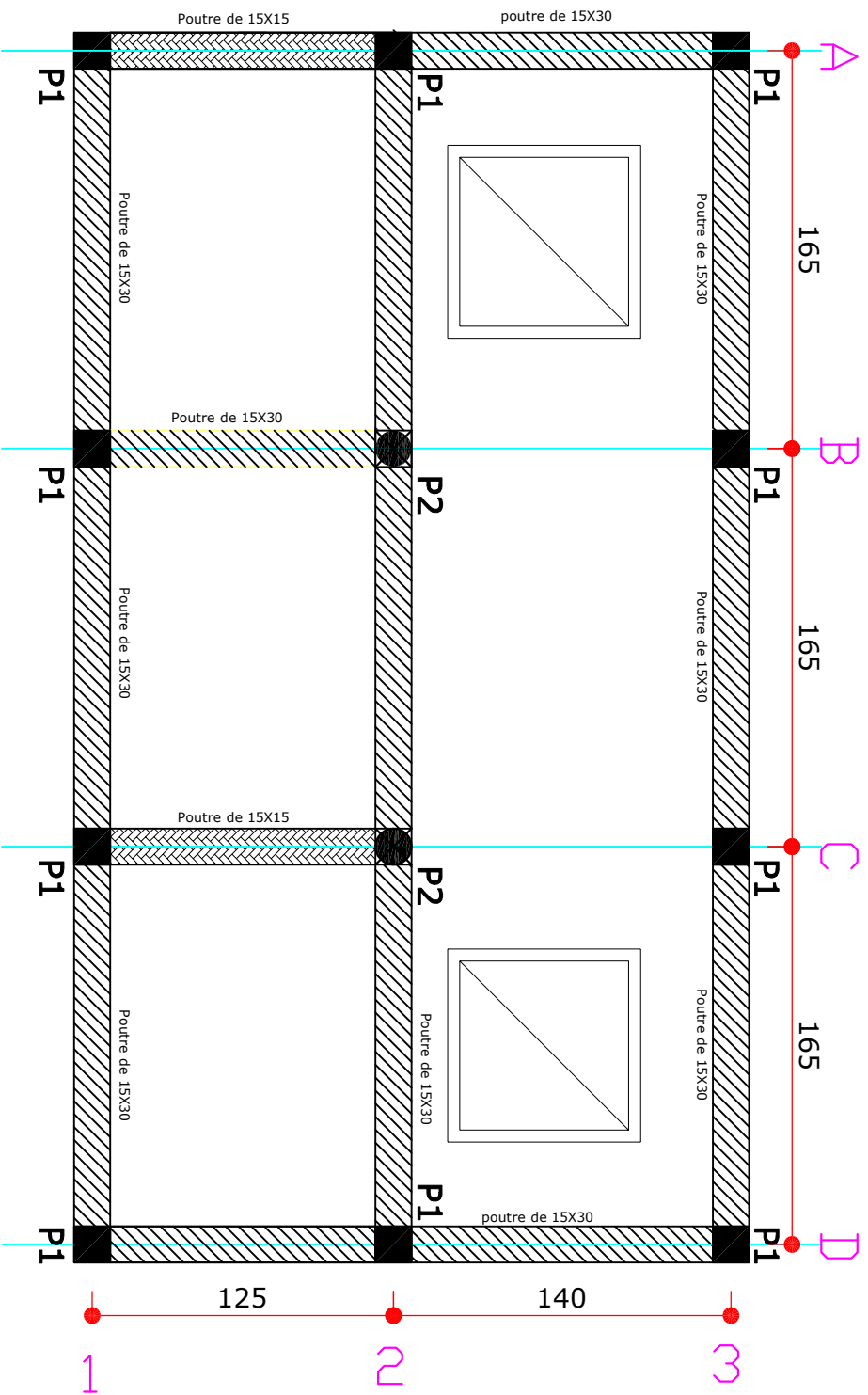
PLAN N° 12 LS-3

Latrines 03 cabines-Façade Latérale

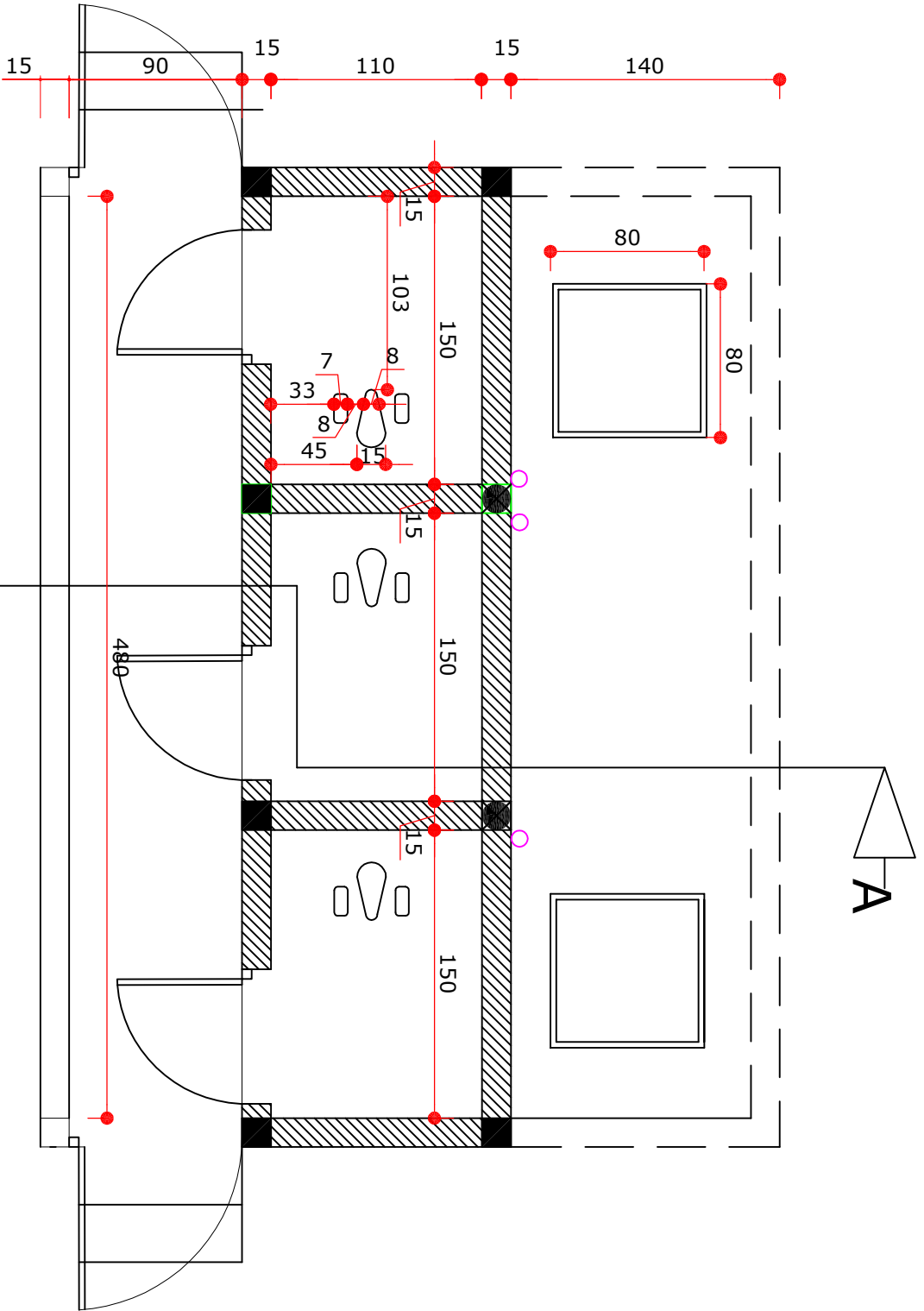


PLAN N°13 LS-3

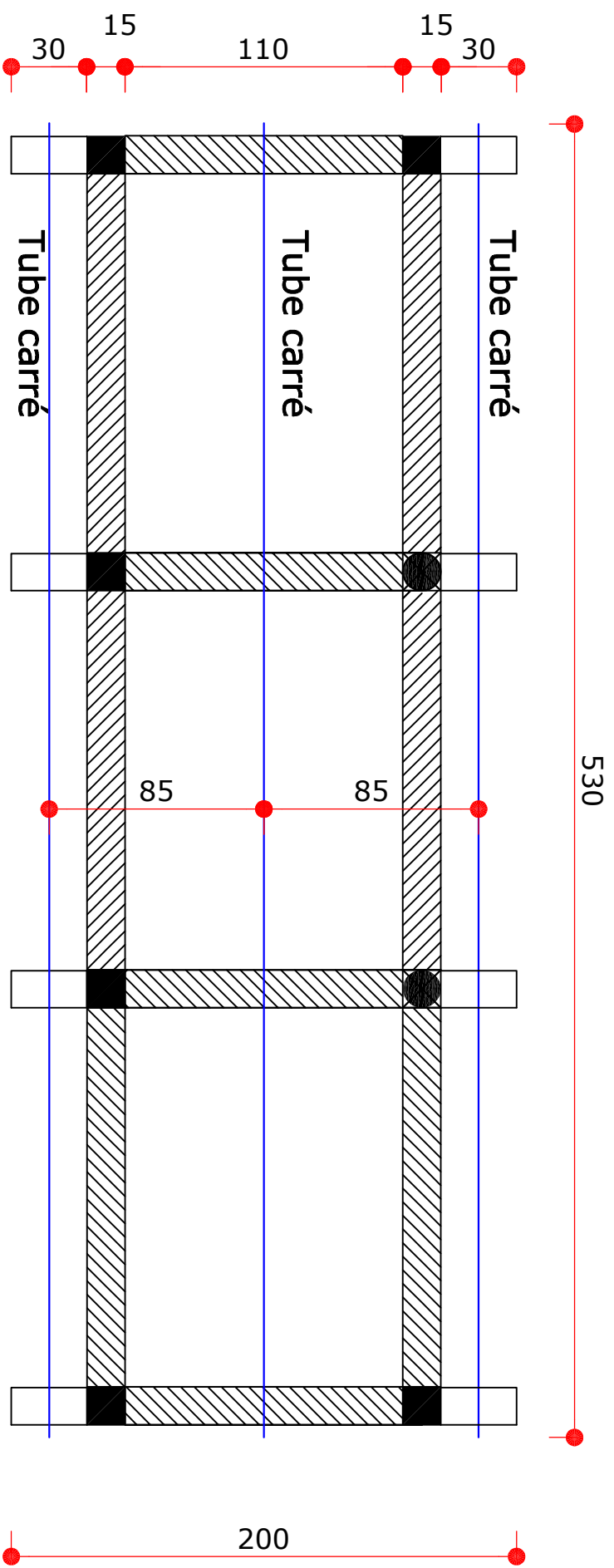
Latrines 03 cabines-plan de fondation



PLAN N°14 LS-3
 Latrines 03 cabines-plan de coffrage dalle Supérieure

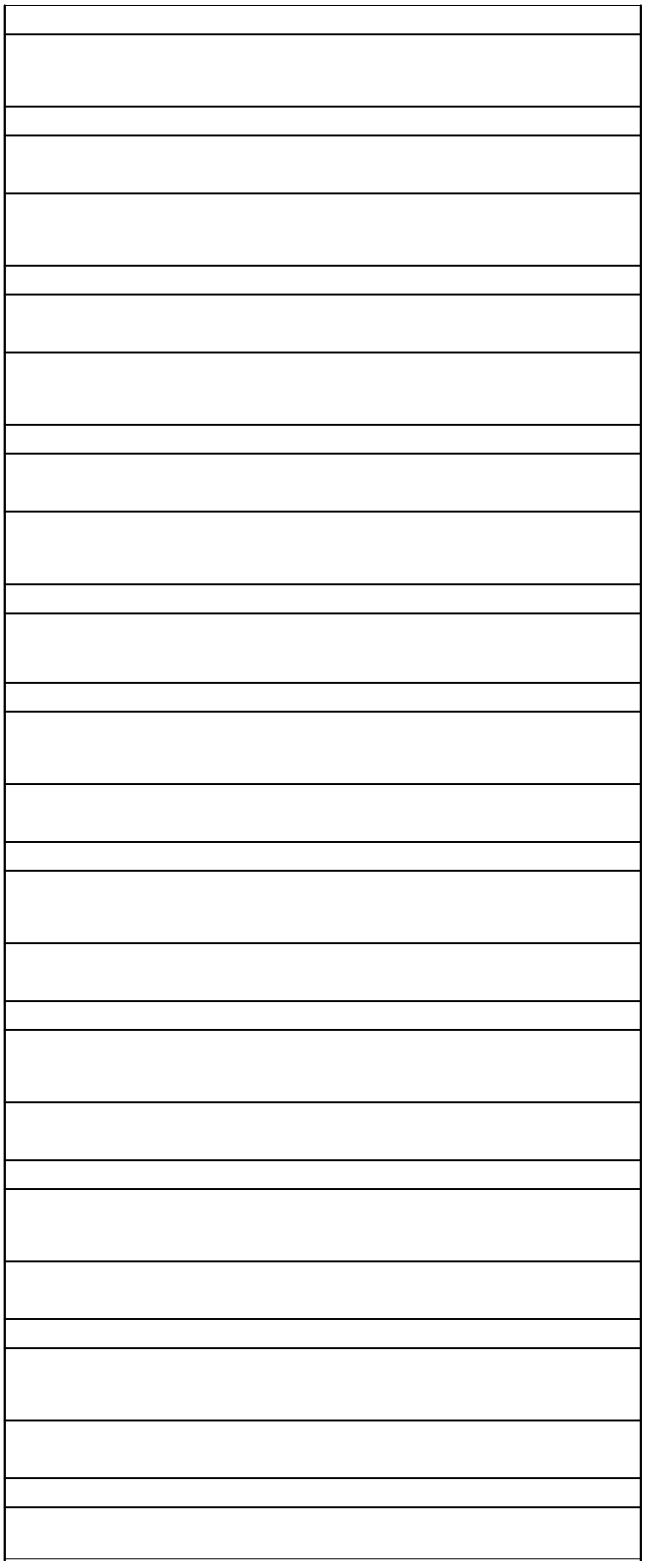


PLAN N° 15 LS-3
A
 Latrines 03 cabines-vue en plan



PLAN N°16 LS-3

Latrines 03 cabines-plan de Charpente

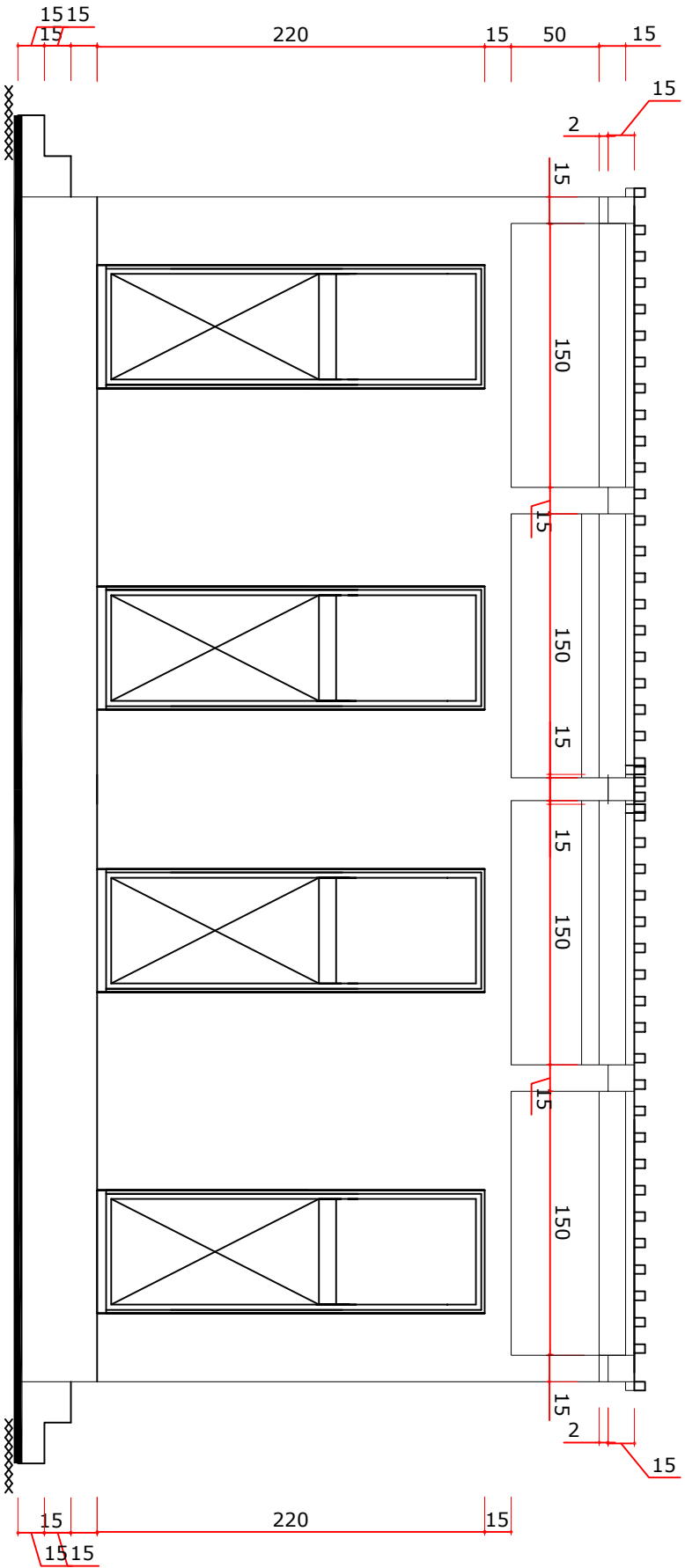


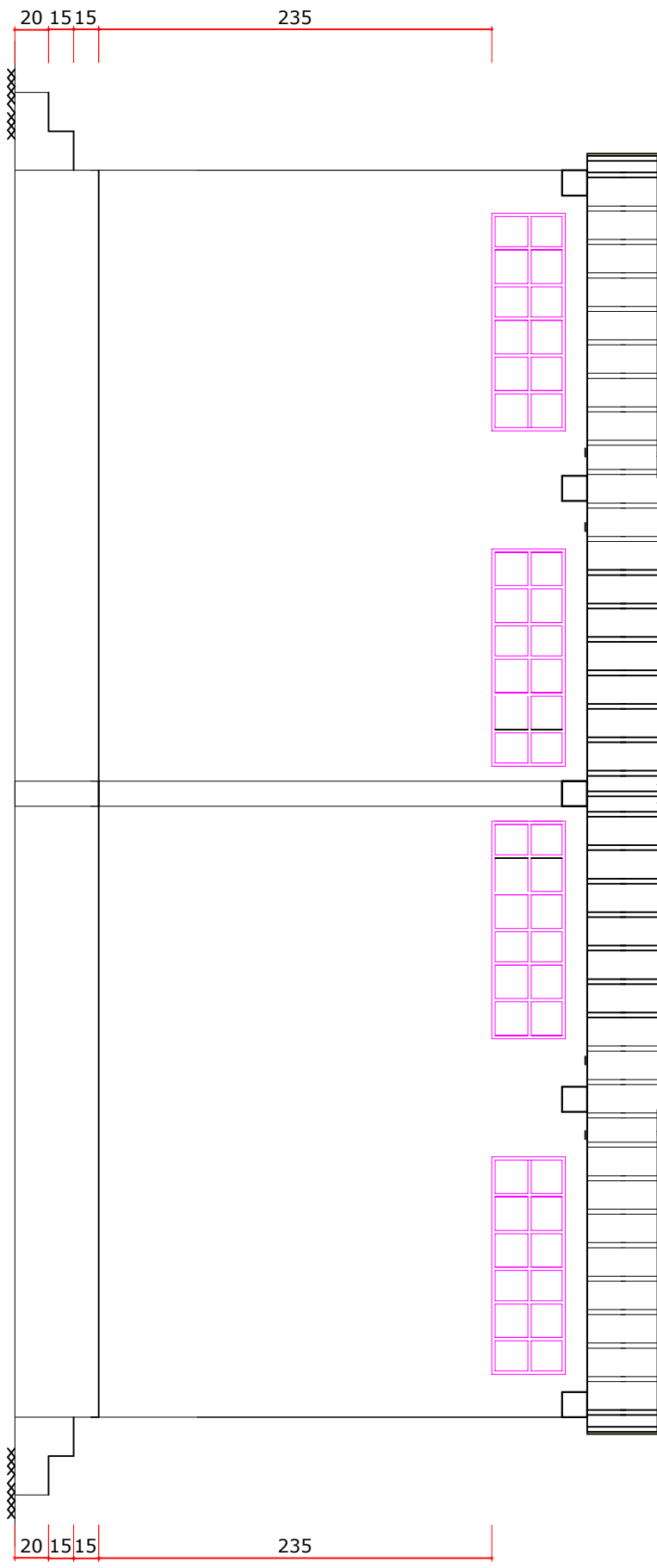
220

540

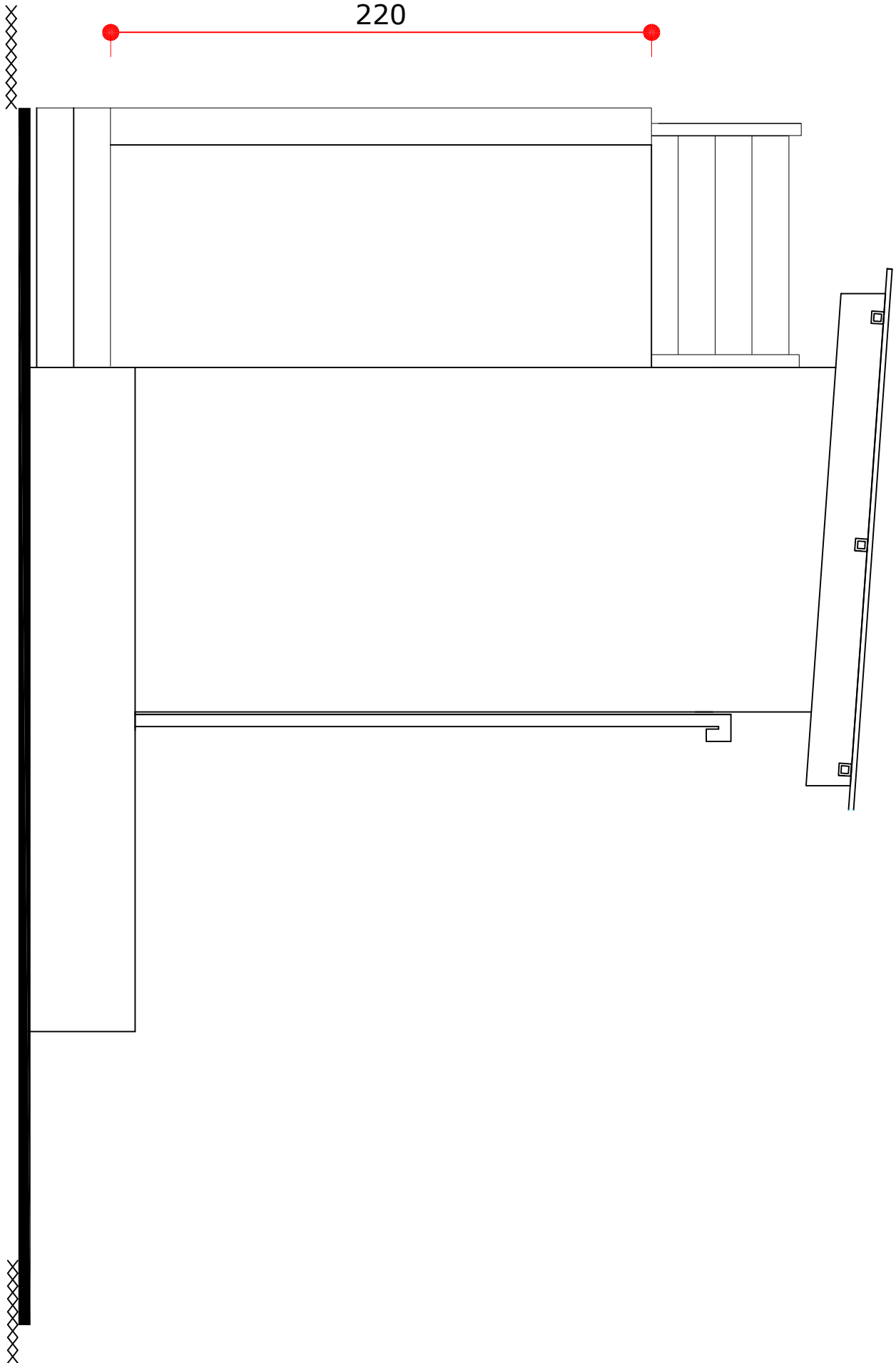
PLAN N° 17 LS-3
Latrines 03 cabines-plan de Toiture

PLAN N°18 LS-4
Latrines 04 cabines-Façade Principale





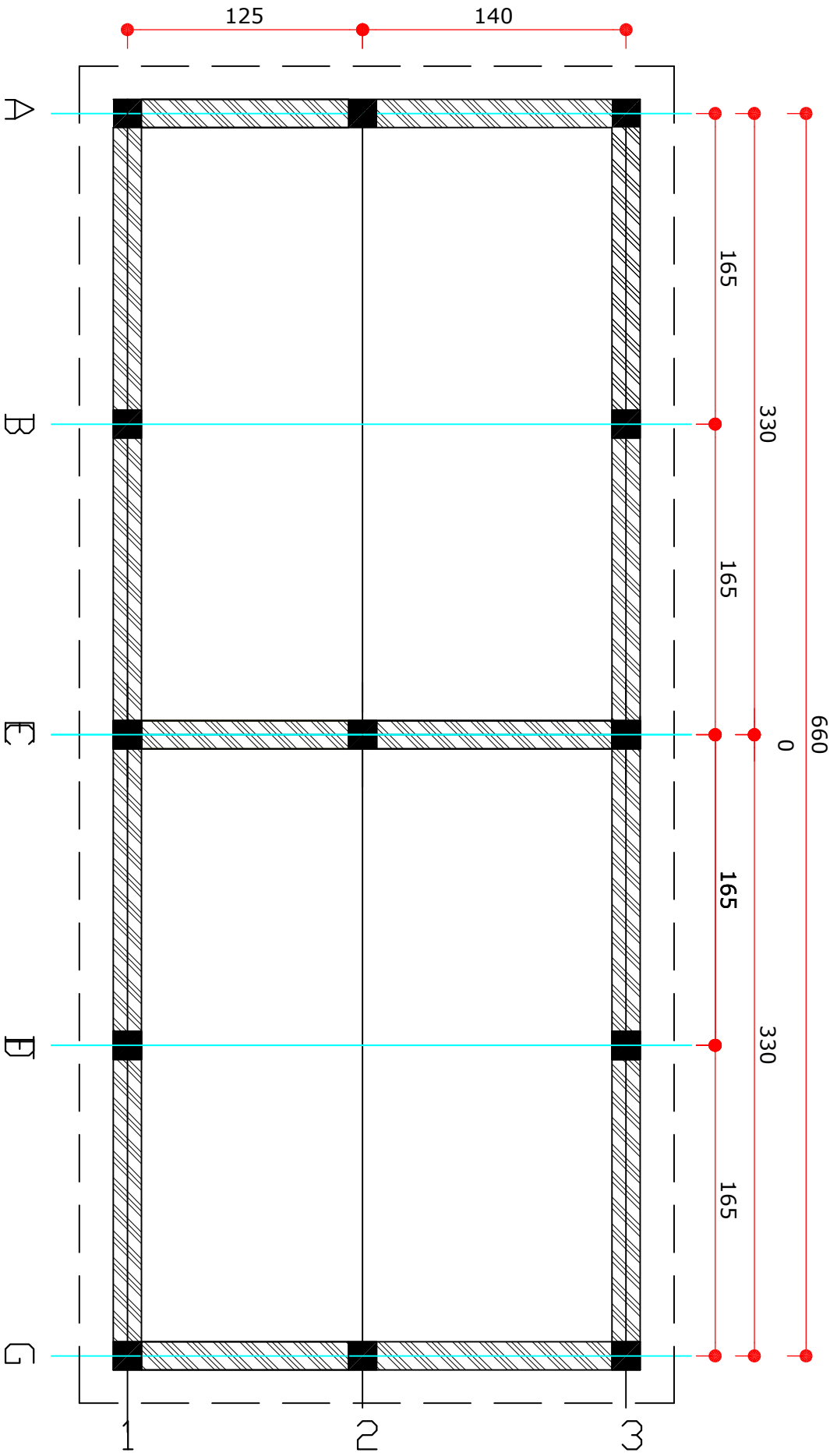
PLAN N°19 LS-4
Latrines 04 cabines-Façade arrière



220

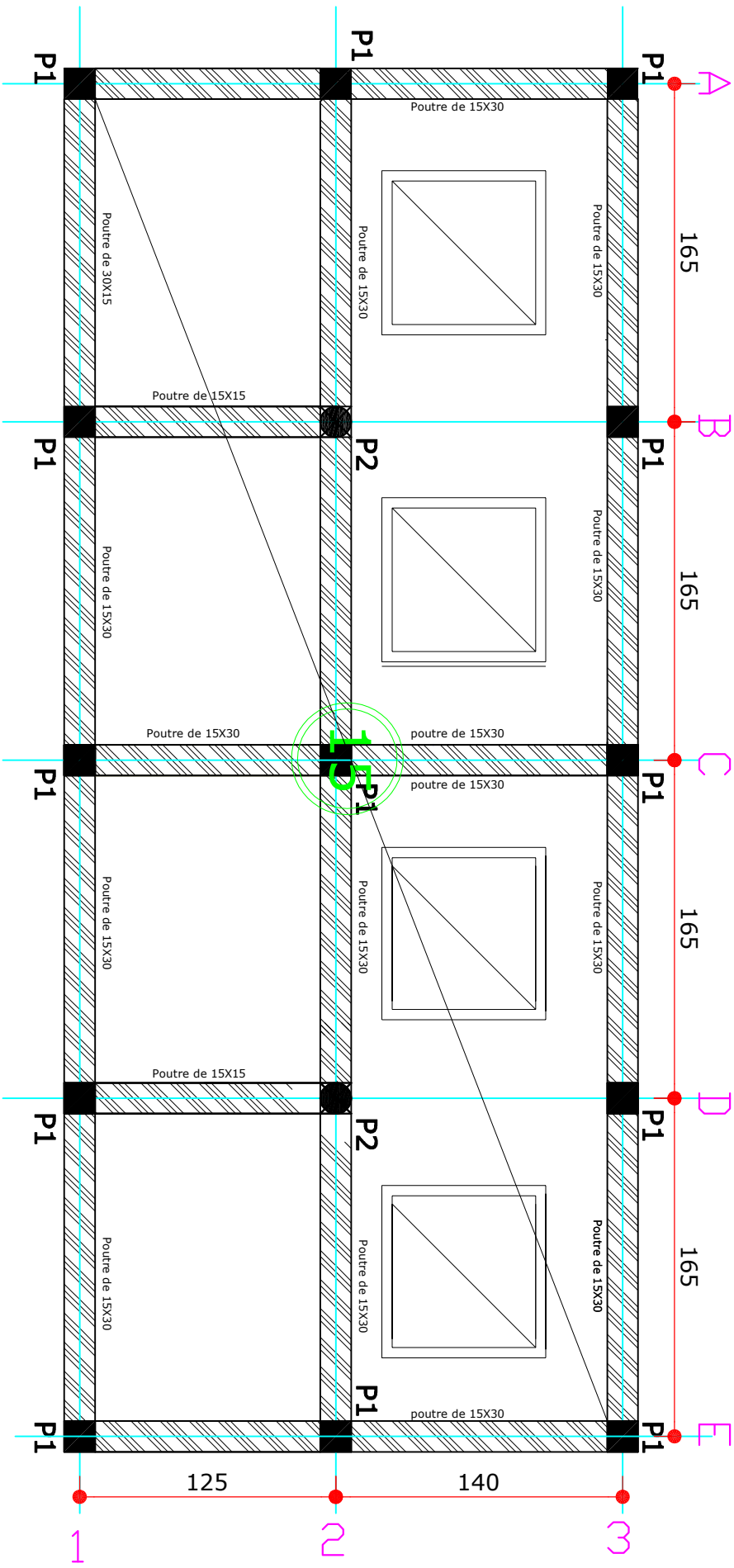
PLAN N° 20 LS-4

Latrines 04 cabines-Façade Latérale



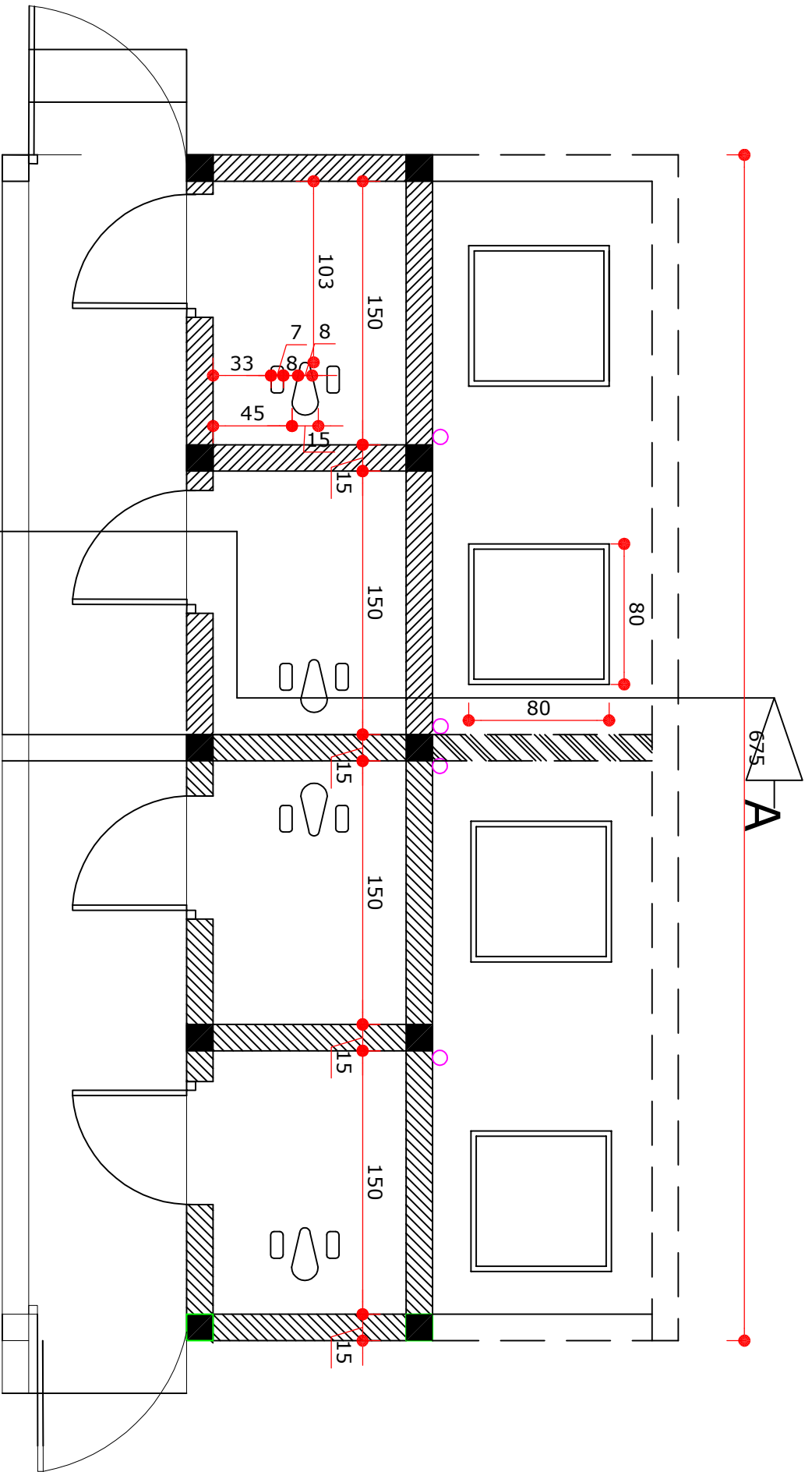
PLAN N°21 LS-4

Latrines 04 cabines-plan de fondation

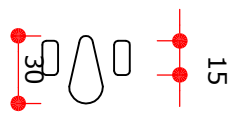


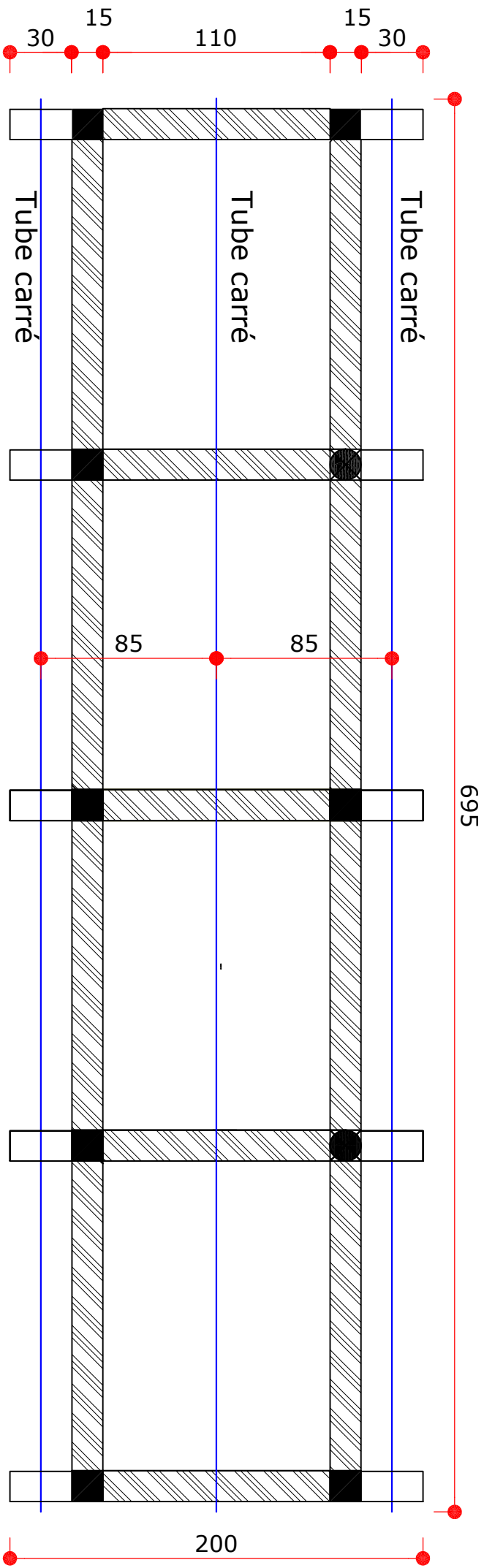
PLAN N°22 LS-4

Latrines 04 cabines-plan de coffrage dalle Supérieure



PLAN N°23 LS-4
A
 Latrines 04 cabines-vue en plan

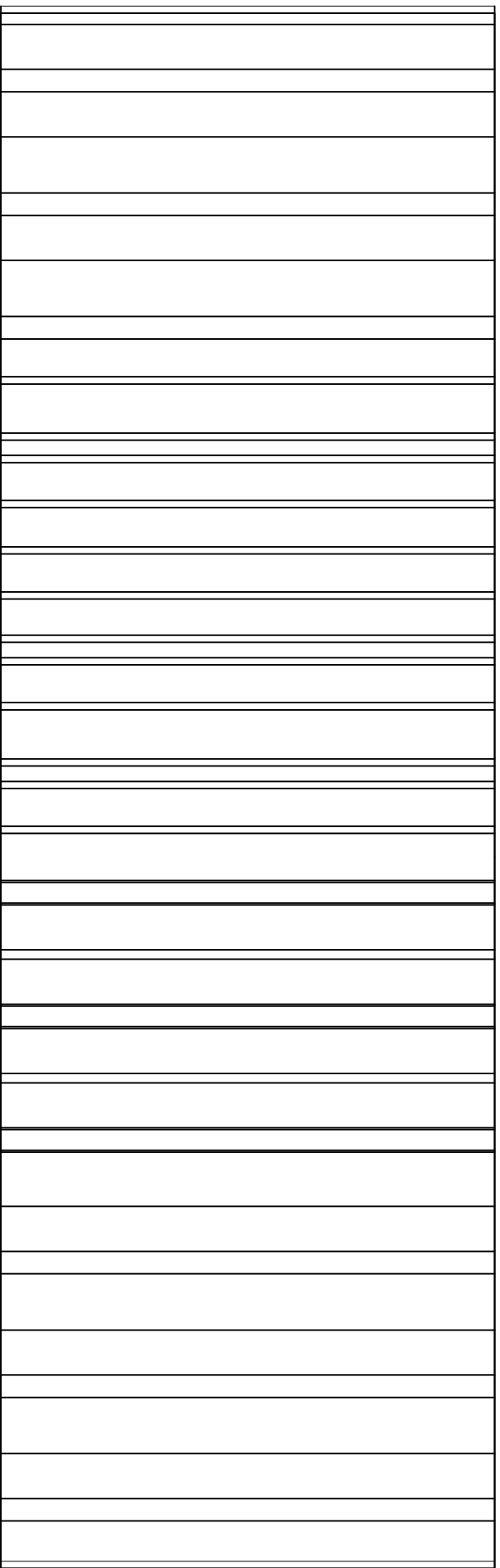




PLAN N°24 LS-4
 Latrines 04 cabines-plan de Charpente

220

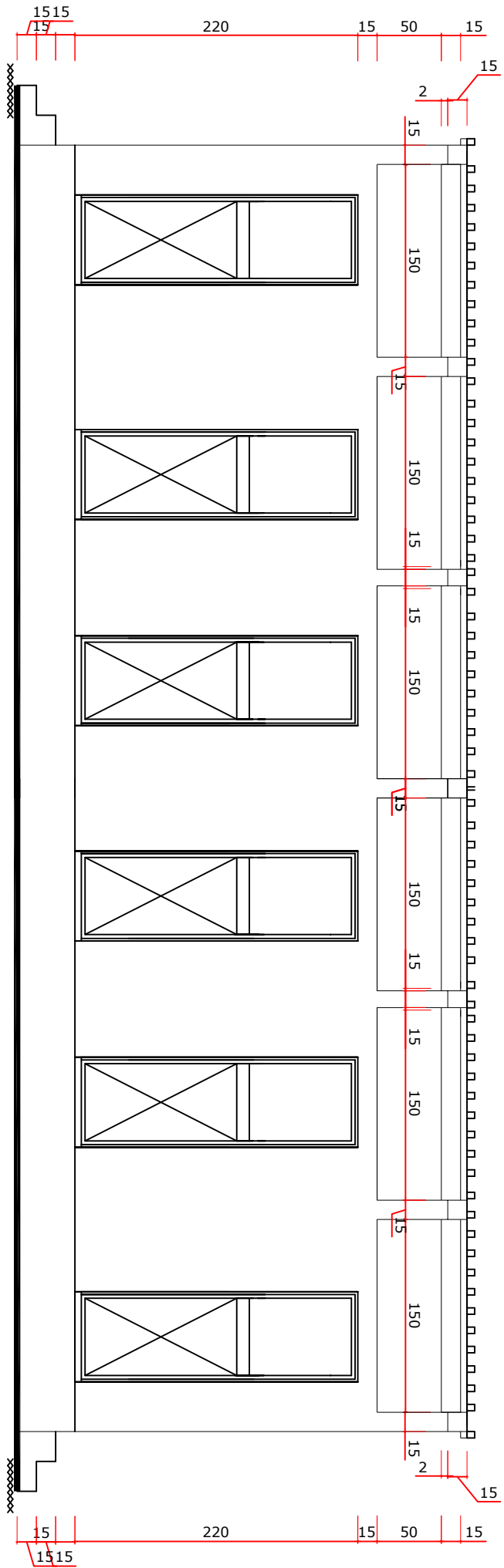
705



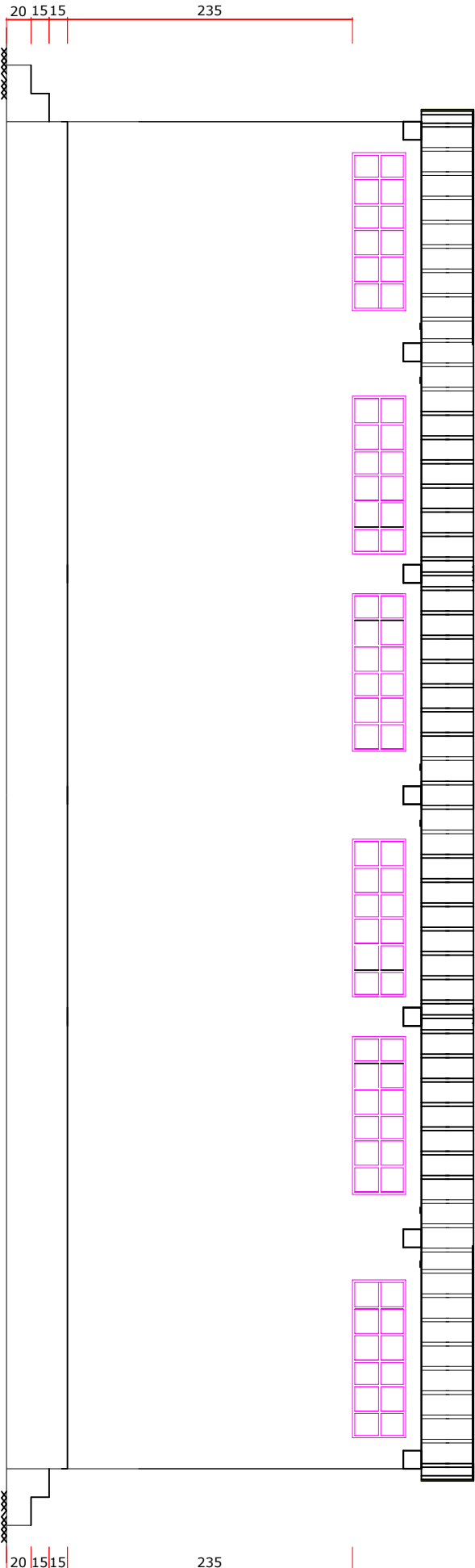
PLAN N° 25 LS-4

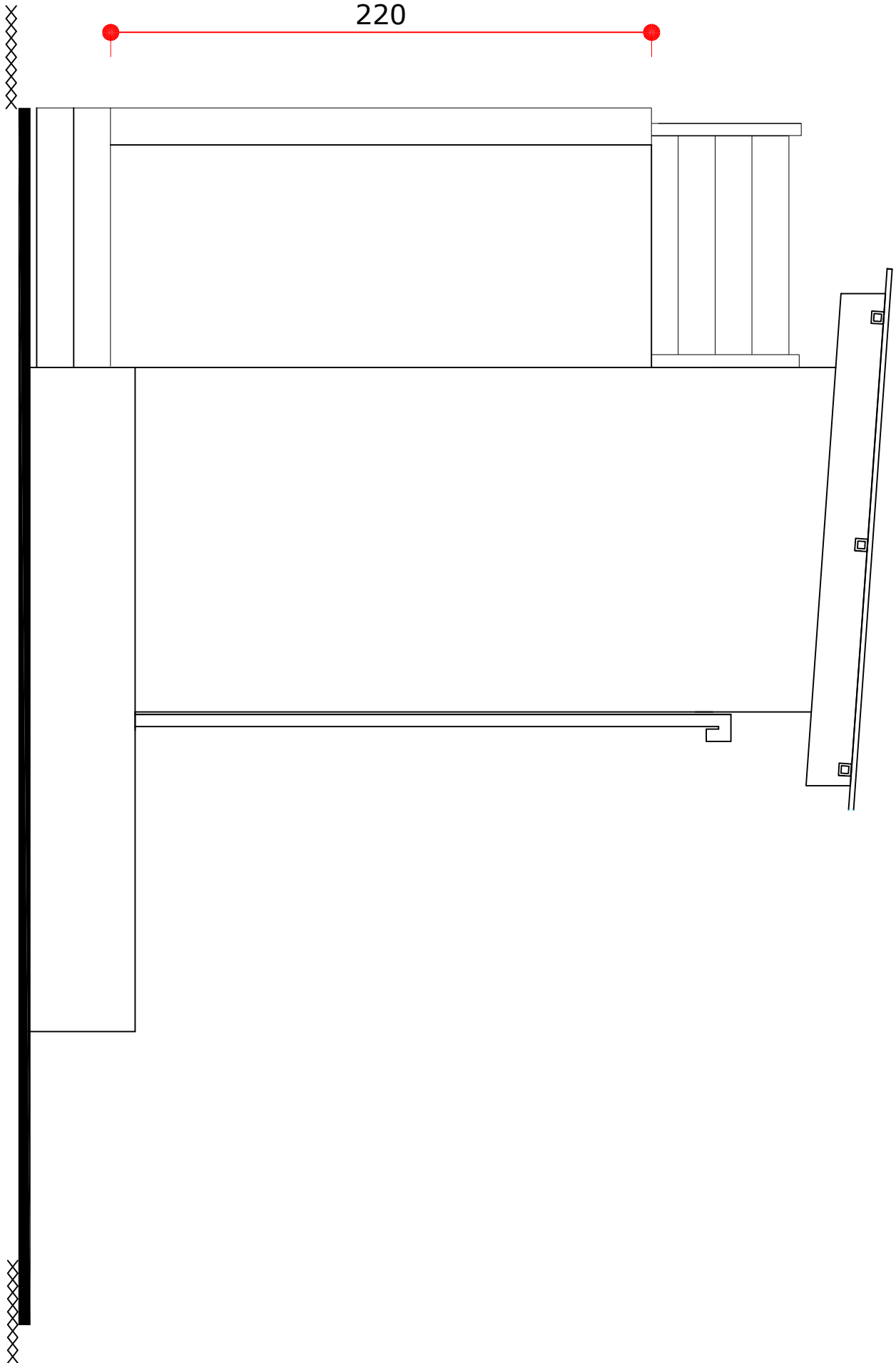
Latrines 04 cabines-plan de Toiture

PLAN N° 26 LS-6
Latrines 06 cabines-Façade Principale



PLAN N° 27 LS-6
Latrines 06 cabines-Façade arrière

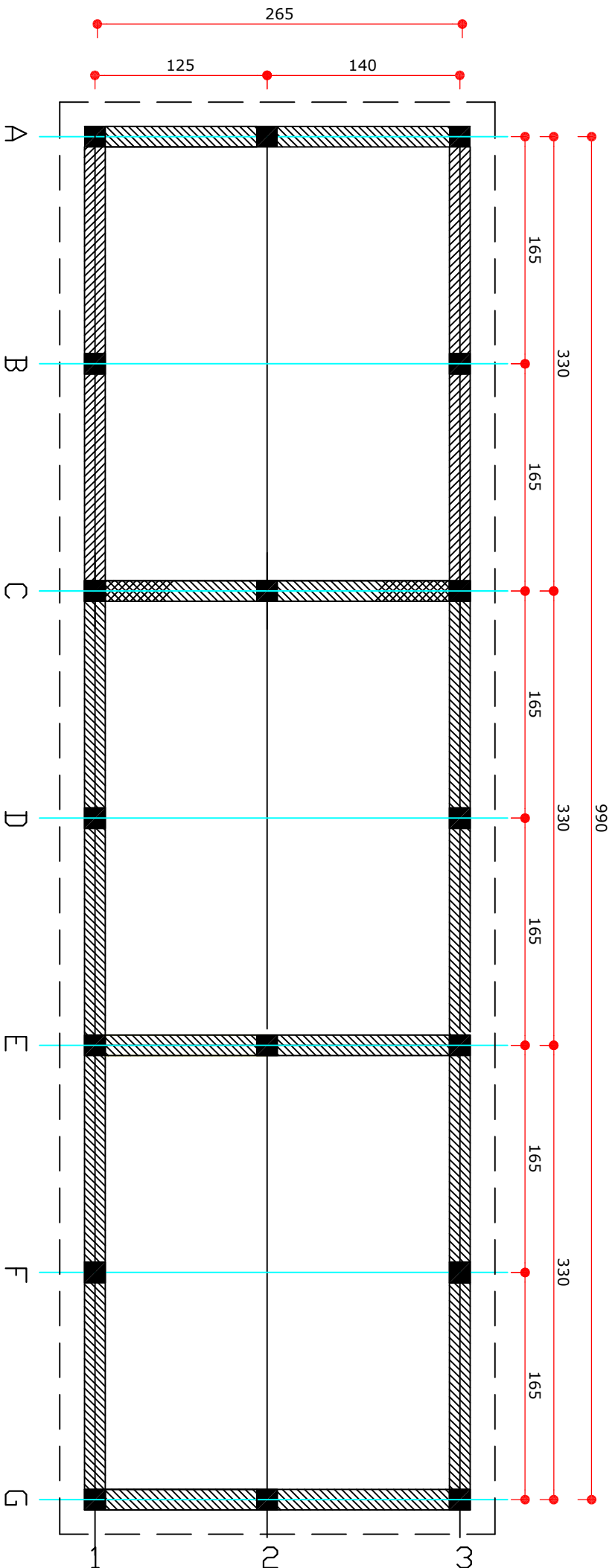




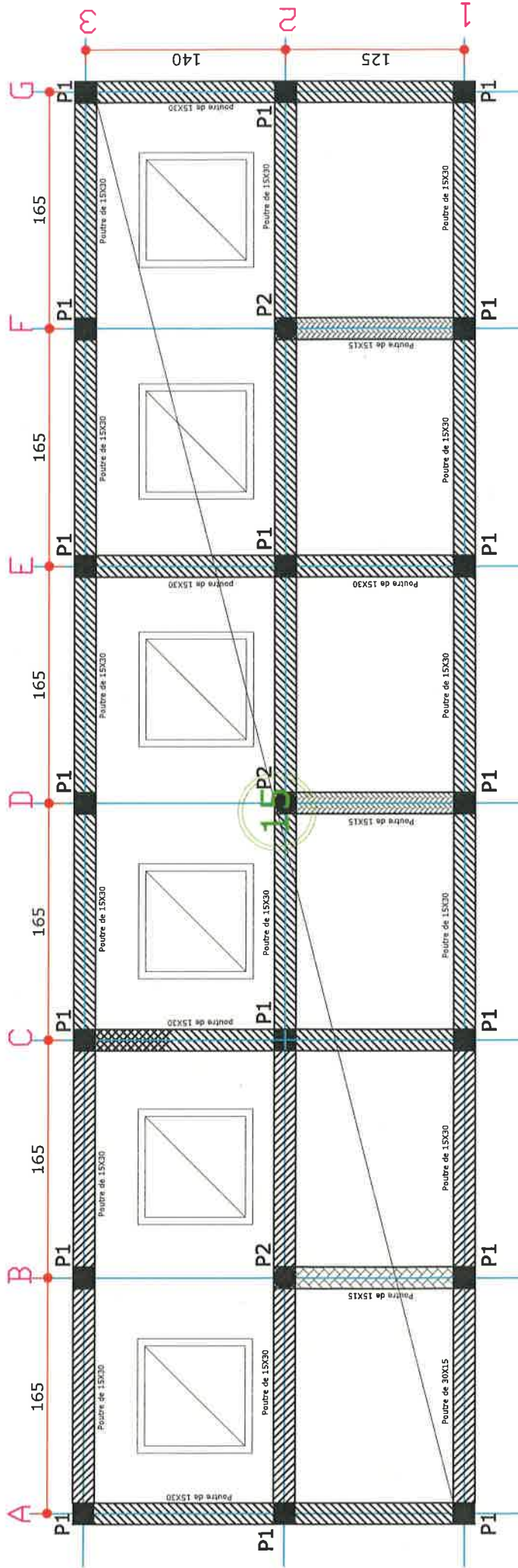
220

PLAN N° 28 LS-4

Latrines 06 cabines-Façade Latérale

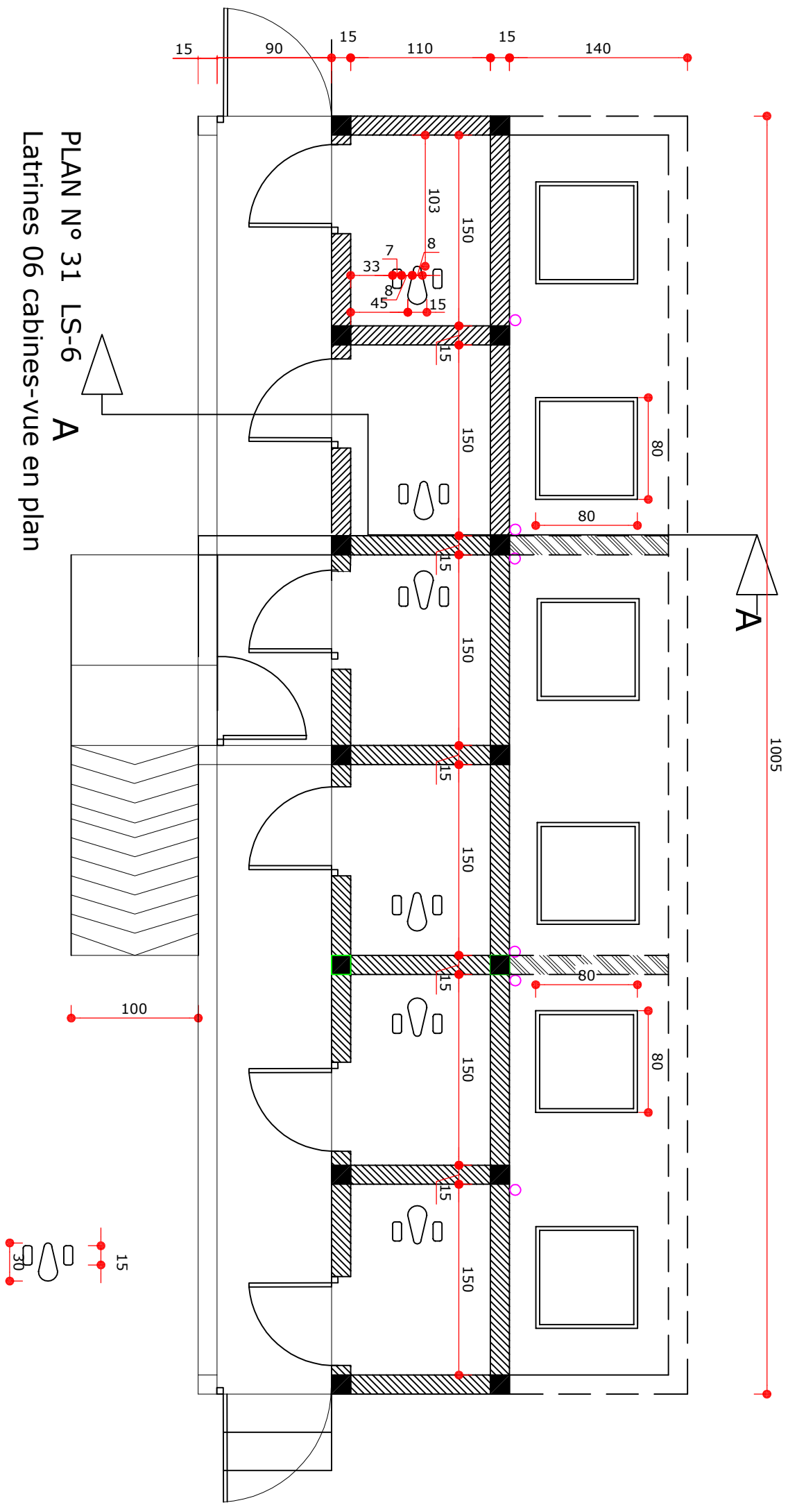


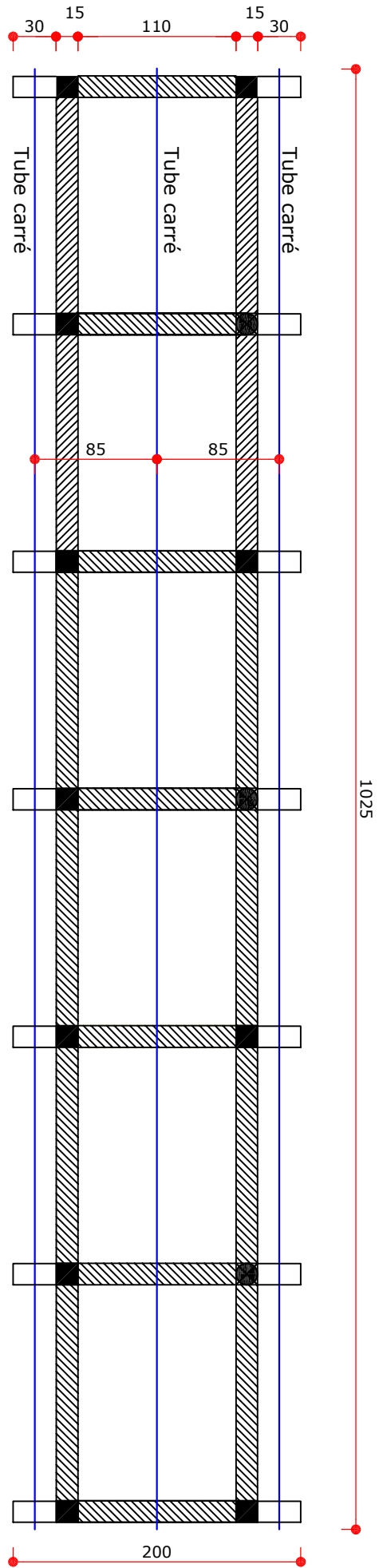
PLAN N°29 LS-6
 Latrines 06 cabines-plan de fondation



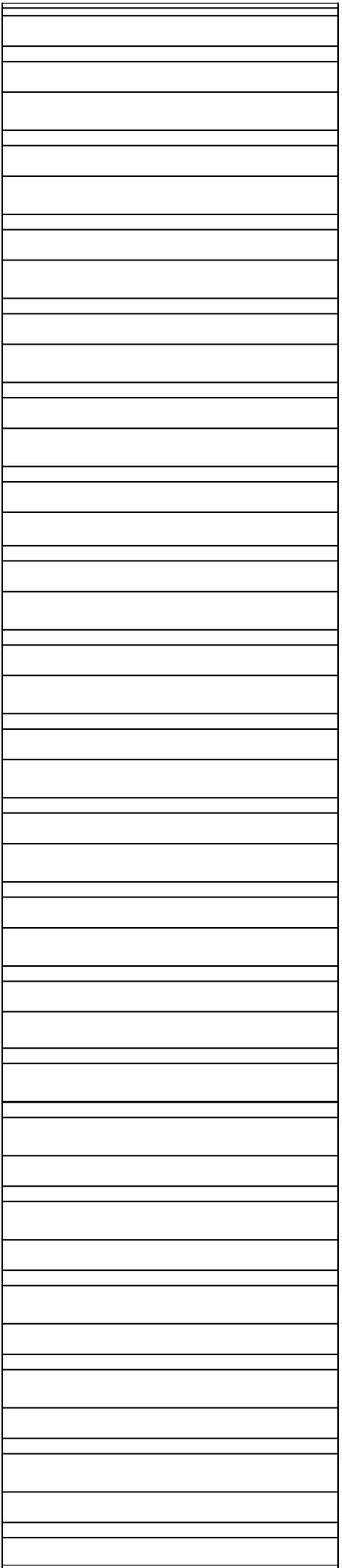
PLAN N°30 LS-6
 Latrines 06 cabines-plan de coffrage dalle Supérieure

PLAN N° 31 LS-6
 Latrines 06 cabines-vue en plan





PLAN N°32 LS-6
 Latrines 06 cabines-plan de Charpente



PLAN N° 33 LS-6
Latrines 06 cabines-plan de Toiture