

# CLIMATE RESILIENT WASH IN ETHIOPIA



World Health  
Organization



**Sally J Edwards,**  
**WHO Regional Office for Africa,**  
**Brazzaville, Congo**

## Health Sector

- CC & Health Technical Working Group from 16 relevant government ministries, agencies and academia. Working as technical wing for CC & Health (established Nov 2013)



- Member of CC & Health TWG

## Water, Sanitation and Hygiene

- Climate Resilient Water Safety Plan Expert Group (established Dec 2014)



- CR WSP Validation Workshop Mar 2015
- Photo: Osman Y WHO

# Policy, Strategy & Guidelines Development

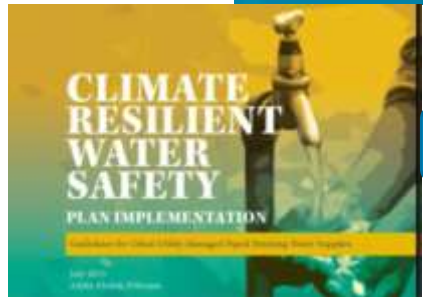
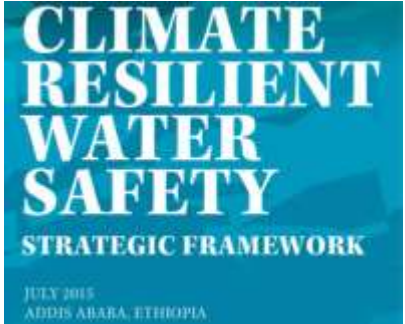


## Health



- Strategic Framework of Climate Resilient National Health System, June 2014
- H-NAP, August 2017

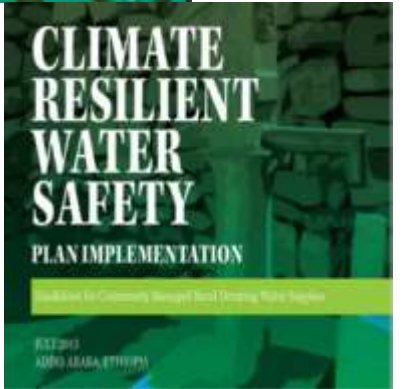
## WASH



URBAN

Guidelines

Rural



# Evidence Generation & Research



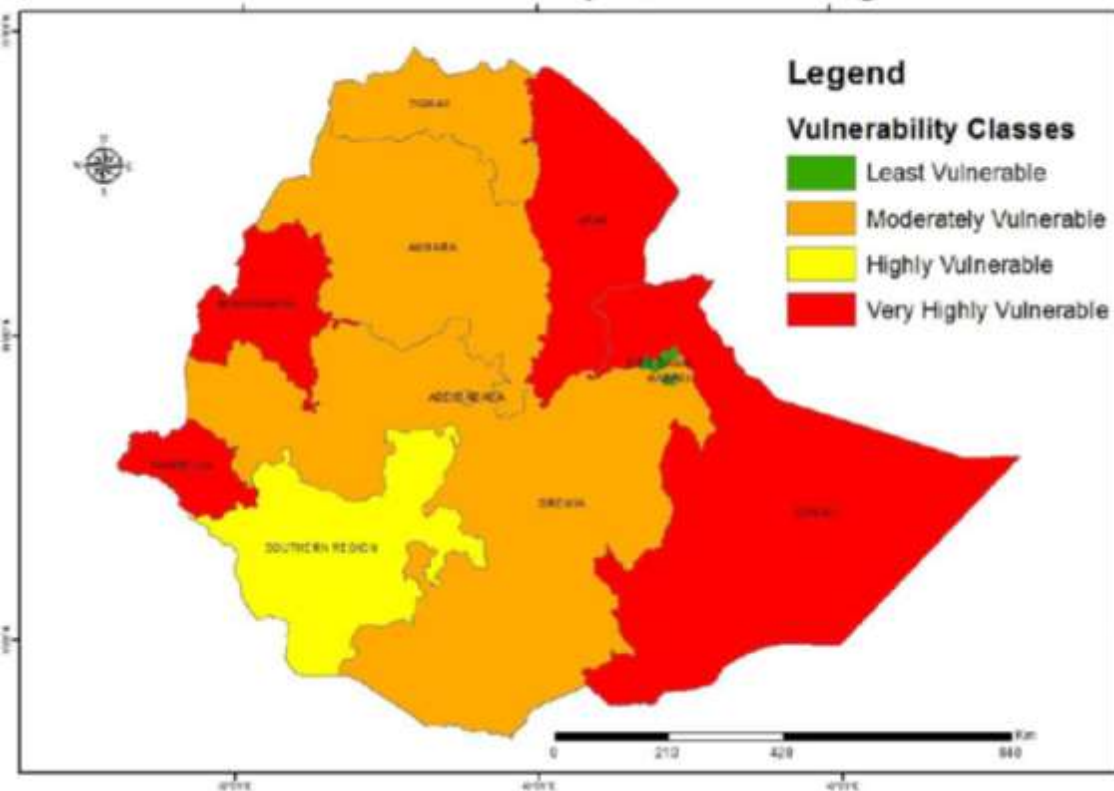
## Health

- Health V&A Assessment Report, Sept, 2015

## WASH

- Review of Policy Documents on Climate Change, WASH and Public Health in Ethiopia, September 2015

**Health Vulnerability Index of Ethiopia**



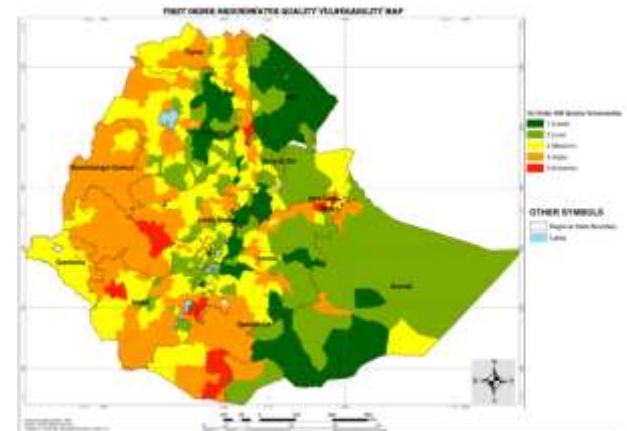
Health V&A assessment findings & Review report helped in H-NAP development



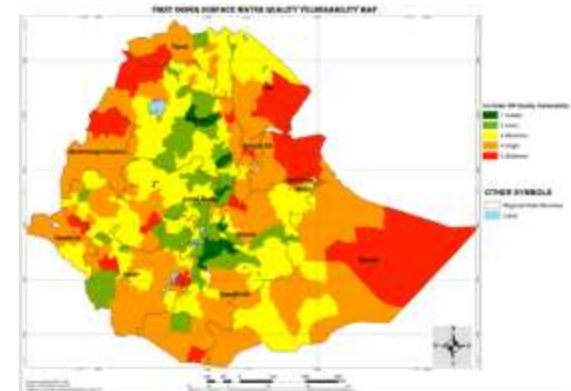
## WASH

- Review of national relevant evidence of effectiveness of household and community WASH and climate resilient interventions, Dec 2014
- Community-based longitudinal study on the changes in water quality, quantity, prevalence of Diarrhoea and Water, Sanitation and Hygiene (WASH) practices overtime and under varying meteorological / climate variables in Kersa District/ Woreda, Eastern Ethiopia, Haramaya University, April 2016- Feb 2018

Water Resource V&A Assessment,  
Oct 2017



Ground Water Quality Vulnerability Map



Surface Water Quality Vulnerability Map

# Key activities for success

- **Capacity Building**

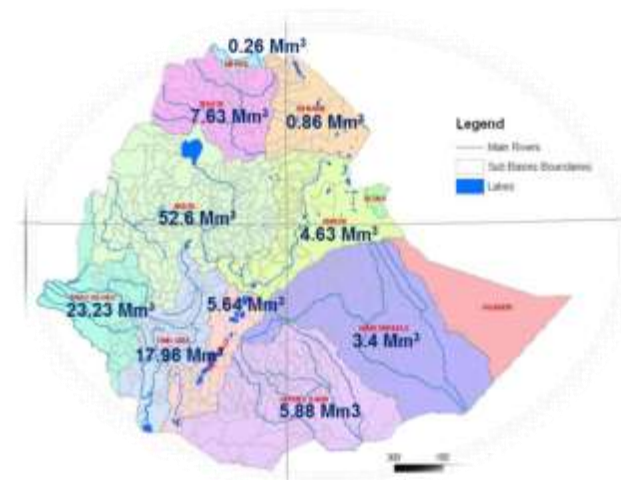
- Over 700 Health & Water sector staffs of government & development partners trained during the last 3 year

- **Climate Resilient Water Safety Plans Pilot Implementation**

- During the last 3 years 25 Water supplies implementing CR-WSP serving a population of around 1 million
- The Pilot covers high land, mid land & low land to address CC & weather viability
- 60 districts included CR-WSPs in to their WASH program



- **Partnership with government counterparts & development partners in CC and Health through resilient WASH**

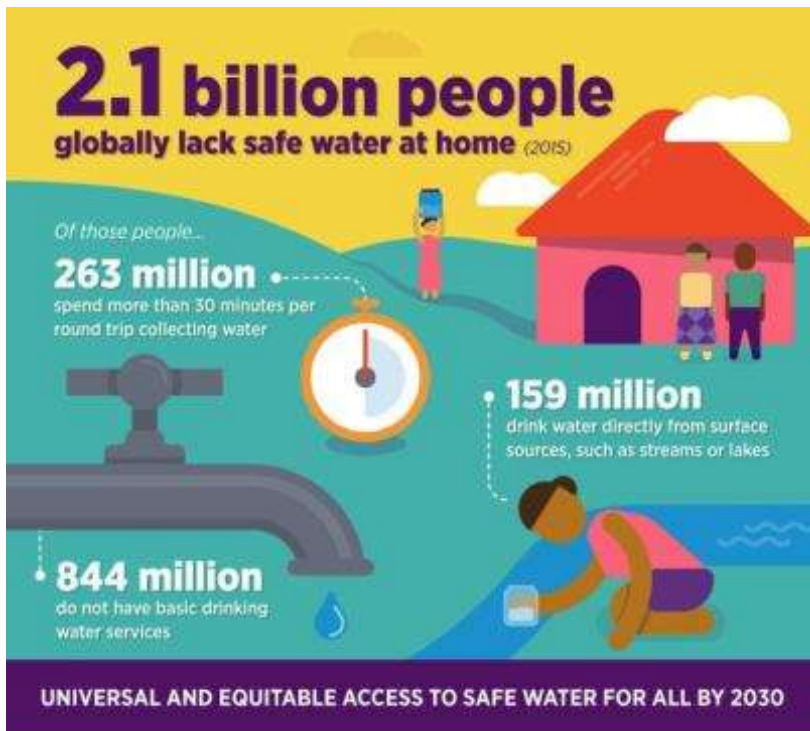


# Conclusions & Lessons

- Continued advocacy, coordination and partnerships for resilient health through WASH
- Evidence generation and country capacity building are key for the health and WASH sector to address CC in a positive manner
- Development and implementation of policies, strategic frameworks & guidelines helped CC to be on the agenda in the health and WASH sectors including in the wider health and WASH program of the country
- This project played a critical role in the provision of financial & technical support in addressing climate resilience in health & WASH

CR-WSP National TOT, Dec 2014,  
Photo Waltaji, T, WHO





**Thank you**

**Sally J Edwards**

**Technical Advisor, Climate Change and Health,**

**WHO Brazzaville**

**edwardss@who.int**