



each life matters



Climate Change Adaptation in Medair Lebanon Projects

Integrating Environmental Resilience into Humanitarian
Action

Climate Context in Lebanon

- Lebanon faces rising temperatures, water scarcity, and increased natural disasters.
- Climate change is projected to reduce Lebanon's GDP by 14% by 2040 and 32% by 2080₁.
- Vulnerable populations, especially refugees, are disproportionately affected.

- Source: World Bank Climate Change Knowledge Portal:
<https://climateknowledgeportal.worldbank.org/country/lebanon>

Medair's Environmental Commitment

- Compliance with environmental laws.
- 4Rs: Reduce, Reuse, Repair, Recycle.
- Sustainable procurement and renewable energy use.
- Environmental education and community engagement.

Adaptation in Practice – Health Sector

- Solarized PHCCs reduce reliance on fossil fuels.
- Eco-friendly sanitation and waste segregation.
- Community engagement ensures culturally sensitive, sustainable practices.
- Climate risk awareness integrated into hygiene sessions.

Adaptation in Practice – WASH Sector

- NEAT+ tool used for environmental risk assessments.
- Solar-powered water systems and buffer zones around water sources.
- GIS Mapping of WASH components and risk evaluation
- Water conservation, reuse, and community training.
- Nature-based solutions like composting and greywater reuse.

Adaptation in Practice – Shelter Sector

- Sustainable shelter design using local materials and solar energy.
- Weatherproofing kits and solar water heaters.
- Fire safety and DRR integrated into site planning.
- Community-led maintenance and capacity building.

Internal Planning for Future Adaptation

- Environmental Impact Assessments (EIAs) planned for future shelter projects.
- Green Office Action Plan 2025 to reduce carbon footprint.
- Environmental committees and monitoring indicators introduced.
- Cross-sectoral integration of climate resilience strategies.

Areas of Medium/High WBDs Risk

This map plots the the medium and high risk areas for WBDs as assessed by the WASH Sector along with mapping the recent airstrikes that damaged infrastructure in the area.

Legend

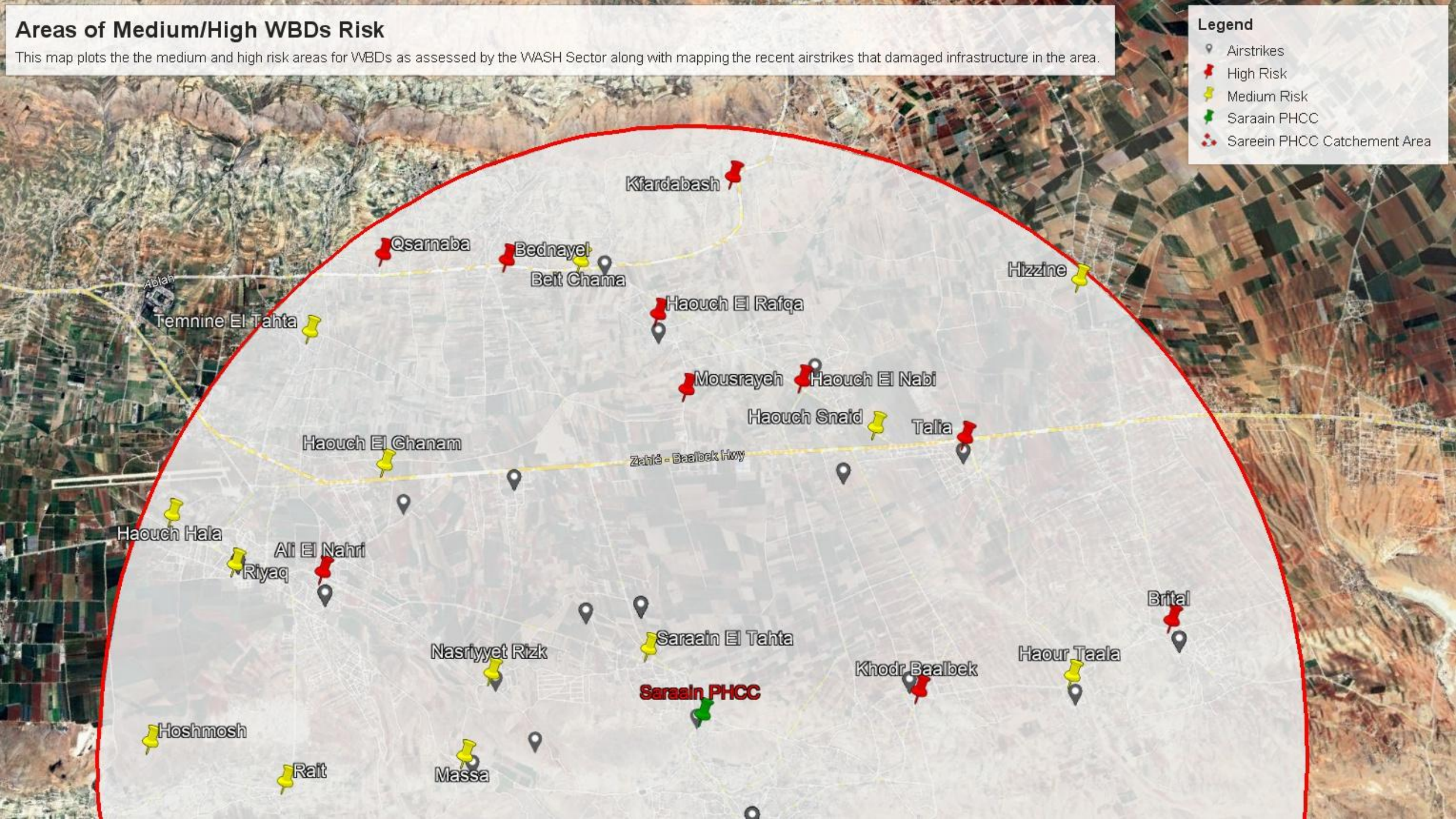
 Airstrikes

 High Risk

 Medium Risk

 Saraain PHCC

 Sareein PHCC Catchement Area



Challenges and Opportunities

- **Challenges:**
 - Limited infrastructure and funding.
 - Conflict-related access restrictions.
- **Opportunities:**
 - Strong community engagement.
 - Partnerships with local authorities and UN agencies.
 - Expansion of solar and recycling initiatives.

Conclusion

- Medair Lebanon is actively integrating climate adaptation into its humanitarian response.
- Through sector-specific measures, community involvement, and strategic planning, Medair is building resilience in vulnerable communities.
- Continued investment in environmental sustainability is key to long-term impact.