



EMERGENCY BRIEFING | Lebanon WASH Sector

Jasmine EL Kareh
LEWAP coordinator

November 28, 2024

WASH sector in Lebanon under war

Current insights

The Displacement Tracking Matrix (DTM) gathers and analyzes data to disseminate critical multi-layered information on the mobility, vulnerabilities, and needs of displaced and mobile populations that enables decision makers and responders to provide these populations with better context-specific assistance.

Amid the current ongoing war on Lebanon that started on October 2023 and escalated quickly end of September 2024, Israeli airstrikes extend far beyond the southern border with impacts on residential houses, shops and civilian infrastructure directly affecting civilian population in those areas. A large number of people were displaced from the Bekaa, South Lebanon and Beirut Southern Suburbs accounting for around 1.5 million displaced people up until October 2024. To know more about the displaced people, you can access the mobility snapshot done by IoM.

- to consult updated DTM information about Lebanon : [Lebanon - Mobility Snapshot](#)

On mid-October, the first confirmed cholera case was detected in Halba area in Akkar. Scabies cases are increasing especially in collective shelters and camps welcoming IDPs. Water-related diseases will increase due to lack of hygiene, water and sanitation (mainly because the collective shelters are public schools that are not equipped to withstand displaced people) 99 primary health care centers have been destroyed or damaged.

Current damages to WASH infrastructures

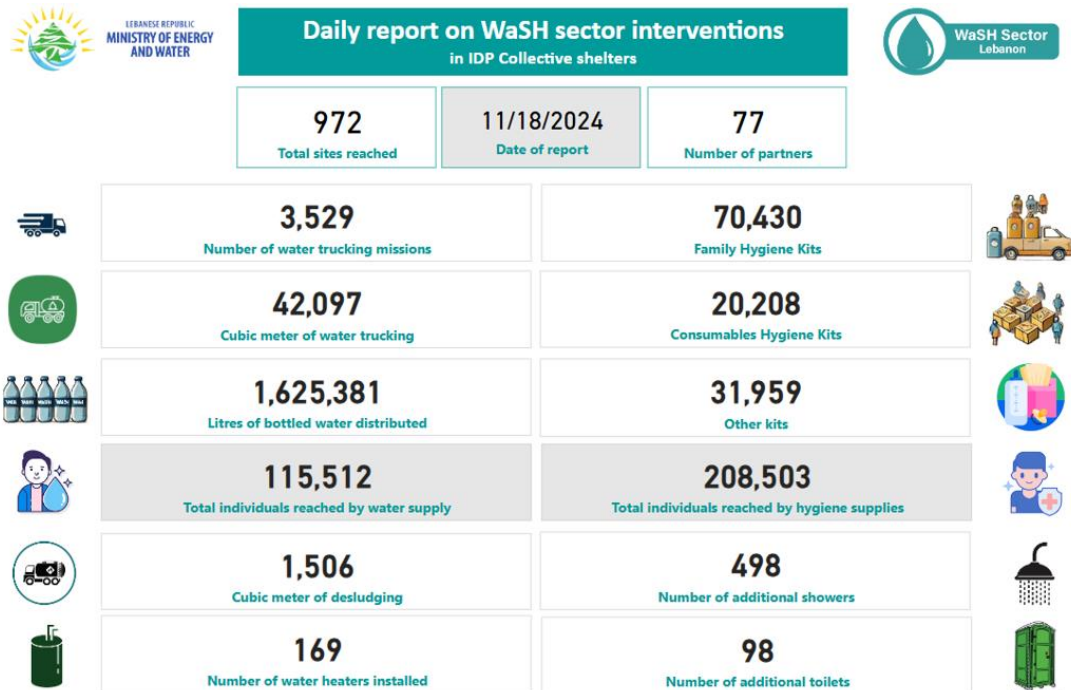
Around 36 different water points were damaged, impacting 400,000 people; access to these points is difficult in some areas due to the bombing of those areas. (UNICEF, 2024). In addition, direct and indirect damages to distribution networks, inaccessibility and issues with power supply for water stations in Beirut suburbs, Bekaa, Baalbek, South and Nabatiye. 11 staff from the South Lebanon Water Establishment were martyred in the last couple of weeks.

As support was needed at a national level with the internally displaced people, partners have shifted some of their work and funding to emergency response and support at collective shelter sites set by the government of Lebanon with the DRM unit of the LRC and UNDP. Local and international organizations have joined forces to provide the needs in collective shelters. An inter-agency coordination is ongoing to provide support for SHELTER, WASH, Livelihood and food.



In 2024, 2,6M people in need for Wash out of 5,6 people living in Lebanon. The required funds for Wash are 38,4M\$ until the end of the year (current needs and estimated projections). There is a large funding gap of 86% to provide WASH services in collective shelters and fuel is needed for water pumping – a big underfunding to cover and maintain the operability of water systems across the country.

77 reporting agencies are intervening in 972 collective shelters out of 1149 set ; the services provided are displayed below:



Description: The WaSH sector in Lebanon continues to address the needs of those affected by the escalating hostilities in the country. Support is provided directly to beneficiaries as well as through the strengthening of systems and water and wastewater infrastructure. This represents the WaSH response in IDPs Collective Shelters since 23rd of September 2024. Data is self-reported by responding partners.

Current needs of the WASH sector

The cluster WASH estimates the current needs of the WASH sector in Lebanon:

- Fuel is needed for around 3M USD/month
- Collective shelters need to be scaled up due to the increase number of IDPs – 12M USD is needed
- Water heaters in collective shelters – 2M USD
- Hygiene kits – 3M USD

Also consideration should be given to the Syrian refugees who were internally displaced due to the war and other marginalized communities in the country.



Partners intervening - Municipalities

Municipalities are on the front line in welcoming displaced people, organizing their distribution between different housing solutions and providing services in refugee centers.

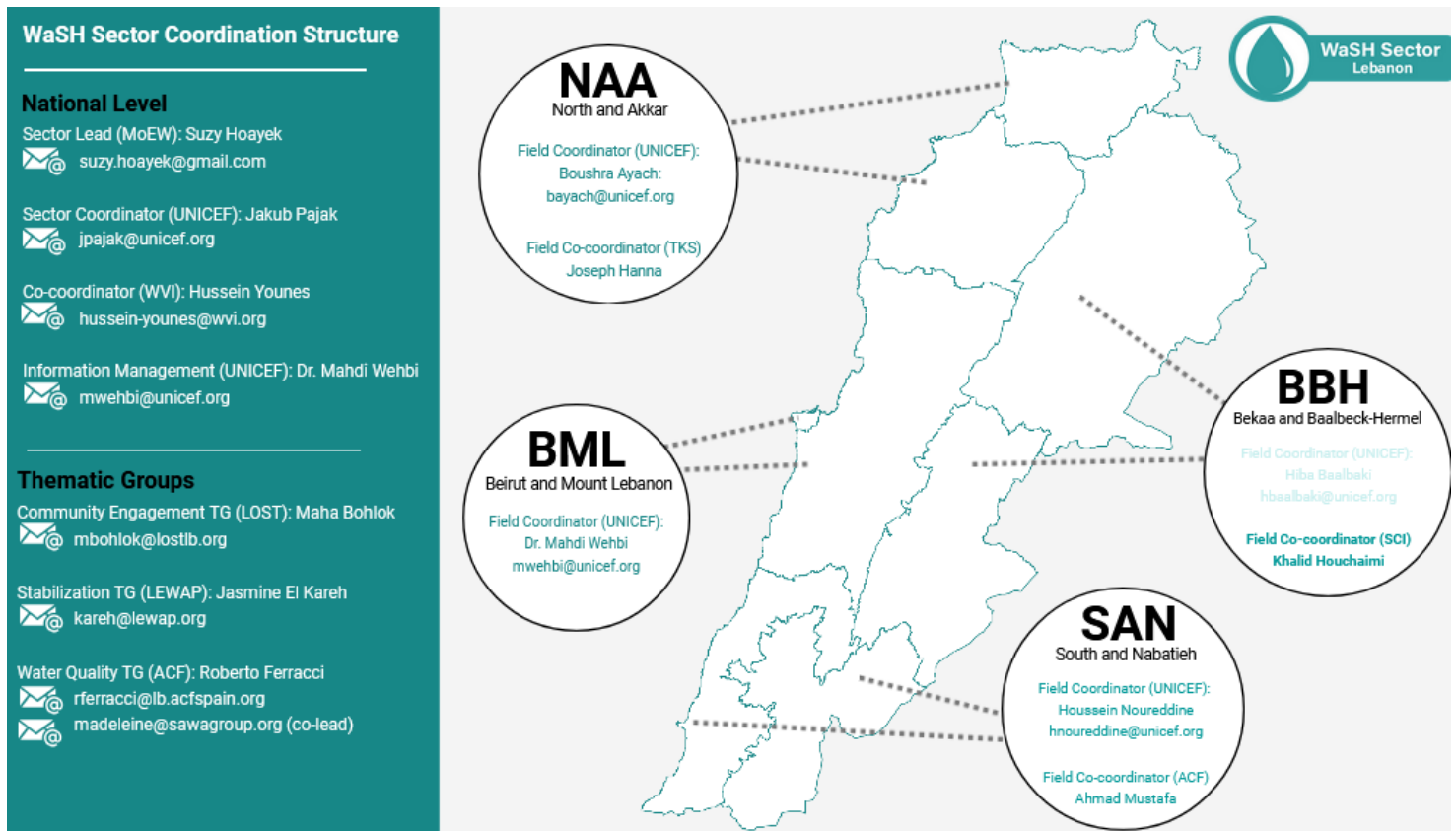
The Bureau Technique des Villes Libanaises (BTVL) is a network of Lebanese municipalities.

- BTVL website: <https://bt-villes.org/fr/qui-sommes-nous>

Partners intervening – WASH Cluster

Under the WASH Cluster, an interactive map was developed showcasing the intervention of partners in response to the war as of September 2nd 2024 – this map shows who is doing what and where, 59 partners have been intervening in emergency response since the start of the escalation on the South of Lebanon in October 2023.

- WASH cluster website: <https://response.reliefweb.int/lebanon/wash>
- To subscribe to the information mailing list: [WASH Sector mailing list](#)





Partners intervening – Civil Society Organizations

ACTED have been working on developing a dashboard that maps the aid services provided by local initiatives in response to the escalation of hostilities in September 2024; this dashboard showcases the different local initiatives, where they are intervening and what are they providing as support. This is still a work in progress.

➤ To access the dashboard [click here](#)

ACTED

Aid services provided by local humanitarian initiatives (2024 conflict displacement)

Total number of organization/Initiative

74

Districts

- Akkar
- Aley
- Baabda
- Bealbek
- Bcharre
- Beirut
- Chouf
- El Batroun
- El Hermel
- El Koura

Type of services provided

- 2 x Collapse structure search and rescue teams
- Apartment Housing Collective Sites
- Assistive devices for people with disabilities
- Call For Volunteers
- Cash Distribution
- Cleaning Detergents and Basic Hygiene kits
- Cleaning tools, Sanitizers, Shampoo, Shower gel, Drawin...
- Counseling about mother health and infants health and ...
- Crrypto
- Debris Removal
- Dental
- Depending on the case
- Detergents kit
- Disposable pad
- Donation Of And Clothes
- Donation Of Food And Water

Organization/initiative focal point

Associations and municipalities may serve as the focal points for assistance seeking as they alone represent the state

- Affat edris
- Ahmad Shaiban
- Alexandre Adam
- All Taha /Tisak/ Mada Al Saikha/central Baker Zaha

Organization/ initiative name if applicable

Organization/ initiative name if applicable	District	Name of the organization/initiative	Organization / initiative type	Name of the focal point for affected people seeking assistance	Phone number of the focal point	Email of the focal point
Name not specified	Beirut	Whity Mission	Individual	Patricia Nasr	3,928,769	Hpatricia454@gmail.com
Adyan						
Ahla Fawda						
AID Lebanon						
Akkar Trail - درب عكار						
Aljalil Association						

Type of donation accepted

- In-kind donations
- Cash donations
- Volunteering

The table below shows the intervention of different partners across different governorates in Lebanon in October 2024

COLLECTIVE SHELTERS ACROSS GOVERNORATES IN LEBANON	PARTNERS INTERVENING
Akkar : 180 public schools as collective shelters	Akkarouna, AND, ANERA, B&Z, Beit El Baraka, CARE, Caritas Lebanon, Common Space for All, CONCERN, DRC, Hadatha, Himaya, IMC, IOCC Lebanon, IOM, IRC, Islamic Relief Lebanon, KAFA, Key of Life, Kuwait Red Crescent, Lebanese Red Cross, LRI, Medical Aid For Palestinians (MAP), Mercy USA, MSF, NRC, Nusaned, PCPM, PU-AMI, Right to Play, RMF, Relief International, Ruwwad Tanmiya, Save the Children, Solidarités international, TdH-It, UNHCR, UNRWA, WFP, WHH-Hadatha, White Hands Association and World Vision.
Baalback-Hermel : 74 public schools as collective shelters	ACF Spain, AMEL, Fondation Mérieux, HAND, Himaya, IMC, IOCC Lebanon, IRC, JRS, Lebanese Red Cross, LOST, MEDAIR, Mercy Corps, Nusaned, Relief International, Sawa Blessed, SAWA Group, TdH-It, URDA, WFP, World Vision
Beirut : 151 public schools as collective shelters	ACF Spain, Afla Fawda, Al Makassed, AMEL, ANERA, AVSI, B&z, Bedayati, Beit El Baraka, CARE, Caritas Lebanon, Dar Al Zahraa, DCA, Embrace, GIZ, Himaya, Imam Sadr Foundation, Intersos, IOCC Lebanon, IOM, IRC, Islamic Relief Lebanon, JRS, Lebanese Red Cross, MADA, Makhzoumi, MDM, NRC, Nusaned, Oxfam, Plan International, RDFL, Relief International, Right to Play, SHEILD, Sawa Blessed, SBT, Save the Children, Tabitha-Dorcas, TdH-L, URDA, War Child Holland, WFP and World Vision
Bekaa : 145 public schools as collective shelters	ACF Spain, ADRA, AMEL, ANERA, Arc-en-ciel, B&Z, Beit El Baraka, DRC, FEMALE, HAND, Himaya, IMC, Intersos, IOCC Lebanon, IOM, IRC, Islamic Relief Lebanon, JRS, KAFA, Lebanese Red Cross, LOST, LRI, MEDAIR, Michel Daher Social Foundation – MDSF, Mouvement Social, NRC, Relief International, Salam LADC, SAMS, Sawa association, Sawa Blessed, SAWA group, Save the Children, Solidarités international, TdH-L, UNRWA, URDA, WFP and World Vision

COLLECTIVE SHELTERS ACROSS GOVERNORATES IN LEBANON	PARTNERS INTERVENING
Nabatiye : 23 public schools as collective shelters	ACF Spain, AMEL, Caritas Lebanon, IMC, Lebanese Red Cross, Save the Children, SHEILD, UNICEF, URDA and World Vision
Mount Lebanon : 342 public schools as collective shelters	ACF Spain, ACTED, ADRA, AFDC, AMEL, ANERA, AVSI, B&Z, Beit El Baraka, CARE, Caritas Lebanon, CESVI, DCA, Farah Social Foundation, FEMALE, Himaya, IMC, Intersos, IOCC Lebanon, IOM, IRC, Islamic Relief Lebanon, ISWA, JRS, KAFA, Lebanese Red Cross, Lebanese Social Responsibility – LSR, LRI, Makhzoumi, Medglobal, Medical Aid for Palestinians (MAP), Mouvement Social, NRC, Nusaned, Order of Malta, Organization Nationale de Développement Economique et Social – Ondes, Oxfam, Plan International, PU-AMI, RDFL, Right to Play, Sawa Blessed, SBT, Save the Children, Tabitha-Dorcas, TdH-It, UNFPA, UNRWA, URDA, WFP and World Vision
North : 164 public schools as collective shelters	ACF Spain, AICA, Akkarouna, Al Ihsan Foundation, Al Midan, ANERA, B&Z, CARE, Caritas Lebanon, CONCERN, Dar Al Zahraa, DRC, Fakkir Be Ghayrak, FISTA, GIZ, Himaya , IMC, Intersos, IOCC Lebanon, IOM, IRC, Islamic Relief Lebanon, Lebanese Red Cross, LECORVAW, Mercy USA, NRC, Nusaned, Order of Malta, Oxfam, PU-AMI, RESTART Lebanon, RDFL, Relief International, RMF, Ruwwad Tanmiya, Save the Children, SIF, Solidarités international, Tabitha-Dorcas, TdH-It, UNHCR, URDA, Utopia, War Child Holland, WFP and White hands association
South : 119 public schools as collective shelters	ACF Spain, Ahlouna, AMEL, ANERA, AVSI, B&Z, Caritas Lebanon, DCA, DPNA, Hilfswerk Austria International HWA, ICRC, IMC, Intersos, IOM, Islamic Relief Lebanon, ISWA, Lebanese Red Cross, LR, Medical Aid for Palestinians (MAP), Mouvement Social, Naba’á, Nabad, NRC, Nusaned, PU-AMI, Right to Play, Sama for development – SFDO, Save the Children, SHEILD, SWSL, TdH-L, UNRWA, URDA, WFP, World Vision and YOU MATTER