



## WHAT IS HAPPENING IN THE NETWORK?

### **TUESDAY LEWAP: INTEGRATED WATER RESOURCE MANAGEMENT AND THE IMPORTANCE OF PARTICIPATORY APPROACH IN LEBANON'S WATER SECTOR\_13 OCTOBER 2020**

On October 13th 2020, LEWAP in coordination with Ibrahim Abdel Al Foundation for Sustainable Development conducted the first online webinar on 'Integrated Water Resource Management (IWRM) and the Importance of Participatory Approach in Lebanon's Water Sector'

The aim of this conference was to inform about IWRM in general with regards to the sustainable development goals and its applicability in Lebanon, and to present the participatory approach and its importance in project development and implementation.

Four speakers presented their knowledge and experience in the topic addressed:

- Dr. Yasmine Jabaly presented a global overview on the Integrated Water Resources Management (IWRM) approach and highlighted the challenges faced in the water sector in Lebanon with their consequences on the long-term.
- Dr. Marianne Saba emphasized on the interlinkages between the Sustainable Development Goals (SDG) and the Integrated Water Resource Management (IWRM) Approach in the aspect of shared responsibility across societies and the integration of actors from across sectors and scales; in other words, the participatory approach.
- Dr. Marie Hélène Nassif's presentation was a critical overview related to the promotion of Water Users Association as a systematic solution in the Lebanese Water Sector and more largely the participatory approach in water resources management. She showed the barriers to such an approach in Lebanon through analyzing three attempts to implement WUA in the case of Canal 900 irrigation system.
- Mr. Ziad Khayat presented the Guiding Principles on Integrated Water Resources Management (IWRM) and the 17 Sustainable Development Goals (SDGs) with special focus on SDG 6. He concluded with some constraints to the implementation of an IWRM among which weaknesses in national water resources policy, law and plans, insufficient financing for IWRM implementation, inadequate inter-sectoral stakeholder coordination and most importantly non-institutionalized public participation which is the main component of a successful IWRM.

• To know more about the webinar, check [the conference report](#)

The Climate Change and Environment Program at Issam Fares Institute for Public Policy and International Affairs is currently conducting a project with Berytech on Small and Medium size Enterprises (SMEs), enabling environment and innovation in the Cleantech sectors (water, energy and waste) in Lebanon.

The study is part of the ACT SMART project funded by the Embassy of Netherlands. The ACT SMART project is a new out of the box approach for strengthening business advancement and job creation

As part of the activities under this study, IFI conducted a mapping exercise of existing SMEs in the water, energy and waste sectors in Lebanon in order to have better insight on the existing landscape. The ultimate aim of this study is to discuss the industry needs and priorities for improving entrepreneurship and the business landscape in the respective sectors, and to extract concrete policy recommendations that could effect change in the enabling environment.

Following the study conducted, IFI hosted workshops with non-SMEs to discuss the results of the surveys conducted with SMEs and possible future opportunities for each sector. LEWAP participated in the Stakeholders' Working Group on Cleantech in the Solid Waste Sector and to the Stakeholders' Working Group on Cleantech in the Water Sector. LEWAP provided insights on the latest activities and updates in the water sector and assisted in allocating SMEs and non-SMEs in the sector.

The main findings of the SWOT analysis conducted with SMEs in the waste sector showed the lack of enough financial and technical capabilities for research and development, lack of sorting policy, absence of standards for waste management practices and lack of public awareness on electronic waste. Most SMEs in the waste sector working at a national level target waste sorting and seperation and municipal waste.

The main findings of the SWOT analysis conducted with SMEs in the water sector showed that there is a need of cooperation between the private sector and academics as well as between the private sector and the public sector. Most of SMEs in the water sector working at a national level target the issue of wastewater treatment with little focus on water supply and consumption.

The final outcome of this study along with the working groups will be to develop a white paper for each of the three sectors (waste,water and energy) on the integration of entrepreneurs in the current market and one paper on the Water Energy Food Nexus.

• To know more about this study, feel free to contact Mr. Marc Ayoub on [ma475@aub.edu.lb](mailto:ma475@aub.edu.lb) .

On 19th of March 2020, Solidarité International (SI) and UPLoAD, with the support of UNICEF and LEWAP, had organized a workshop regarding the management of water trucking and desludging services in informal settlements. This workshop had to be cancelled due to the COVID-19 epidemic and lockdown measures.

The objective of this workshop was to present the results of a market study conducted in 2019 by UPLoAD aiming at a better understanding of the water trucking and desludging markets in informal settlements in Lebanon and their respective value chain to support programming for the provision of these services to vulnerable communities. In addition, this workshop would allow discussions among different actors and decision makers present and work on proposed recommendations and scenarios.

SI, UPLoAD and LEWAP are currently thinking about an alternative safe way to conduct this workshop, meanwhile, the study report and presentation were shared among local water actors in Lebanon for their review and input, if any. These documents will be the supporting documents leading the workshop

To access these documents, check the links below:

- [The Water trucking and Desludging Market Study report \(English\)](#)
  - [The presentation of the study, prepared for the postponed workshop \(English\)](#)
- .....



## KNOWING AND PROTECTING AGRICULTURAL SOILS AND WATERS WITHIN THE FRAMEWORK OF URBAN AND AGRICULTURAL DEVELOPMENTS\_BWE UPLOAD APIEU\_5 NOVEMBER 2020

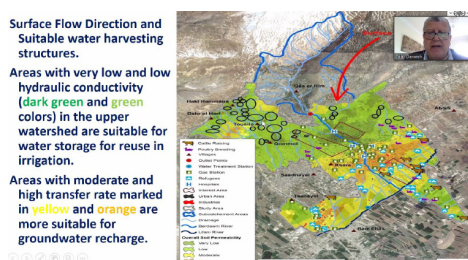
The Urban Planning and Local Authorities Development (UPLoAD) in collaboration with the Bekaa Water Establishment (BWE) and the Atelier Permanent d'Initiation à l'Environnement Urbain (APIEU) have conducted a workshop on November 5, 2020 on knowing and protecting agricultural soils and waters within the framework of urban and agricultural developments.

This workshop falls under a project initiated by UPLoAD and APIEU in response to the demand of the Director General of the BWE Mr. Rizk Rizk on developing potable water for the city of Zahle. This project aims to find a framework for cooperation and better methodologies to protect and improve the management of groundwater and benefit from it within the Bardawni River basin, the city of Zahleh and the Bekaa. And potentially reaching a good integrated and participatory water management.

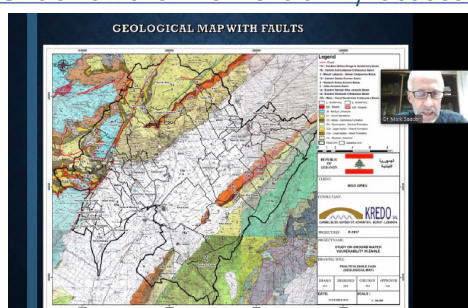
The workshop was divided into two sessions; the first session on Water Protection and Zahlé Development Scheme and the second session on integrated management at the Berdaouni / Qaa Er Rim sub-watershed scale.

To know more about the presentations during these sessions, check the links below:

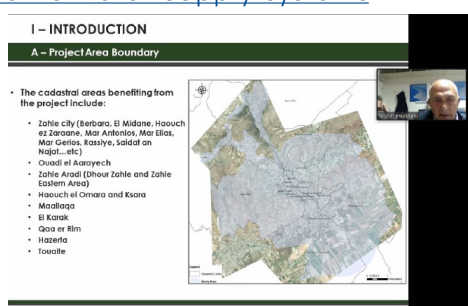
- [Assessment of soil vulnerability and potential for rainwater management in Zahle area](#)



- [Groundwater vulnerability assessment - municipality of Zahle](#)



- [Zahle water supply systems](#)



## INSTITUTIONAL NEWS

### SITUATION AFTER THE BEIRUT BLAST - AUGUST 4 2020

On the afternoon of August 4, 2020, the capital Beirut witnessed a huge explosion at the Port of Beirut leaving 6,000 people wounded and over 180 people killed (UNOCHA). At least 300,000 people lost their home and 150,000 required humanitarian assistance.



Local and international organizations along with personal initiatives responded with direct intervention in the affected communities. Base camps were set onsite, different organizations coordinated with each other on intervention measures at the level of reconstruction, provision of food, cleaning of rubbles, medical and mental help, and other services. The works are still ongoing until present day.

At the level of the WASH sector, the Ashrafiye pumping station was affected from the blast and direct actions were immediately taken and remedied this issue. WASH actors are currently responding more to Lebanese emergency state and providing further assistance to Lebanese communities.

At the political level, the Lebanese cabinet led by PM Hassan Diab resigned from their position, however the government would stay on in a caretaker role until a new cabinet was appointed. Until in October 22, 2020, previous prime minister Saad El Hariri was reappointed to his position - leaving many citizens unhappy with this decision.

At the economic level, the COVID-19 situation exacerbated the situation by forcing lockdowns - many businesses were forced to lay off staff or put them on furlough without pay; the gap between the Lebanese pound's value on the official and black-market exchange rates widened; and banks tightened capital controls. Moreover, prices of food, medication and other products started to rise to compensate for the change in rate - leading to the withdrawal of some products in the Lebanese market.

All of this situation has fled Lebanese people from their country; according to a Lebanese research firm Information International, there was a 36 percent increase in departures from the Beirut airport after the explosion.





### SNOW AND FLOW PROJECT LAUNCH\_03 NOVEMBER 2020

Groundwater is currently facing tremendous stress due to climate change and climate variability in addition to the increase in water needs and demands especially in semi-arid regions. Many efforts for water management have been proposed but there is need for proper conceptualization of water resources and climatic conditions for an appropriate projection of water availability in the future.

AUB in partnership with USJ and O-Life have launched their project on the relationships between snow and groundwater flow in mountainous areas through the Snow and Flow webinar held on November 3rd 2020. This project funded by UNICEF focuses on two case studies in Mount Lebanon Jeita catchment area; Laban spring and Assal spring. Both springs provide water for irrigation and domestic use for the towns of Kfardebian, Bqaatouta, Boqaata, Faraya, Hrajel and Mayrouba. Moreover, 2/3 of the water coming from Laban spring fills in Chabrouh Dam.

The work is divided among the partners with consideration of climate change variability as follows:

- USJ and O-Life started the work with snow research activities
- AUB focused on subsurface characterization and groundwater flow conceptualization
- AUB and USJ worked together on surface water assessment and groundwater availability

Discussions were held around the main challenges faced in water availability, the impact of climate change on groundwater resources in the future, the importance of hydrogeological studies in Lebanon to support updates and changes in policies for better management of water quality and quantity and what are the expected outcomes from this project.

To know more about the details of the project, check the presentations below:

- [SNOW and FLOW Project Introduction](#)
- [Snow research activities](#)
- [Relationship between snow and groundwater](#)
- [Subsurface characterization and conceptualization of groundwater flow](#)



**AB** **AUB** **USJ** **unicef**

Faculty of Arts and Sciences  
Department of Geology

Invites you to

## SNOW AND FLOW

webinar

October 29, 2020  
11:00 am - 12:30 pm

[click here to join!](#)

**Relationships between snow and groundwater flow in mountainous areas: Applications to Laban and Assal Springs (Mount-Lebanon)**

Freshwater, notably groundwater is currently facing tremendous stress due to climate change and climate variability in addition to the increase in water needs and demands, especially in semi-arid regions. As a result, various water management measures have been proposed in the last decades to overcome projected water scarcity and outline alternatives resources for water. However, water supply sustainability is highly dependent on the proper conceptualization of the water resources and the climatic conditions for an appropriate projection of water availability in the future.

For this purpose, this webinar introduces the activities to be undertaken by the American University of Beirut (AUB) and Saint Joseph University (USJ) in the framework of two symbiotic projects:

- Monitoring of annual and inter-annual snow cover fluctuations in the summit areas of Kfardebian and their effects on water resources (USJ)
- Conceptualization of flow in a snow-governed groundwater catchment in Lebanon: A science-based approach for future guidelines for sustainable water management (AUB)

**Program**

11:00-11:05:	Welcome note, Joanna Doumer, AUB
11:05-11:15:	Introduction of the project, Mehdy el Zoubaidy, UNICEF
11:15-11:30:	Snow research activities Charbel Abou Chokro, Antoine Samra and Laurent Drapeau, USJ
11:30-11:40:	Relationship between snow and groundwater, Wajdi Rajen, USJ
11:40-12:00:	Subsurface characterization and conceptualization of groundwater flow Joanna Doumer, AUB
12:00-12:10:	Project Impact and Importance: future work, USJ and AUB
12:10-12:30:	Discussion, Q&A: Concerns and Expectations, Moderators: Panelists

## LATEST PUBLICATIONS

### WATER, SANITATION, HYGIENE, AND WASTE MANAGEMENT FOR SARS-COV-2, THE VIRUS THAT CAUSES COVID-19\_WHO-UNICEF\_JULY 2020

This interim guidance supplements the infection prevention and control (IPC) documents by summarizing WHO guidance on water, sanitation and health-care waste relevant to viruses, including coronaviruses. It is intended for water and sanitation practitioners and providers, and health-care providers who want to know more about water, sanitation and hygiene (WASH) risks and practices.

This guidance was originally published in March 2020. This first update provides details on hand hygiene, sanitation, protecting WASH workers and supporting the continuation and strengthening of WASH services, especially in underserved areas. This additional information has been prepared in response to the many questions that WHO received about the prevention and control of COVID-19 in settings where WASH services are limited and where there is emerging evidence on the presence of viral fragments in excreta and untreated sewage

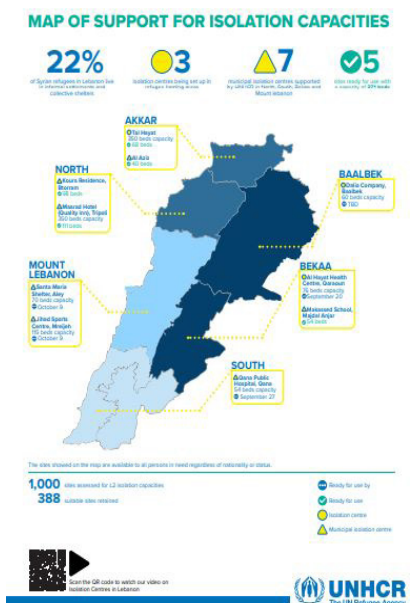
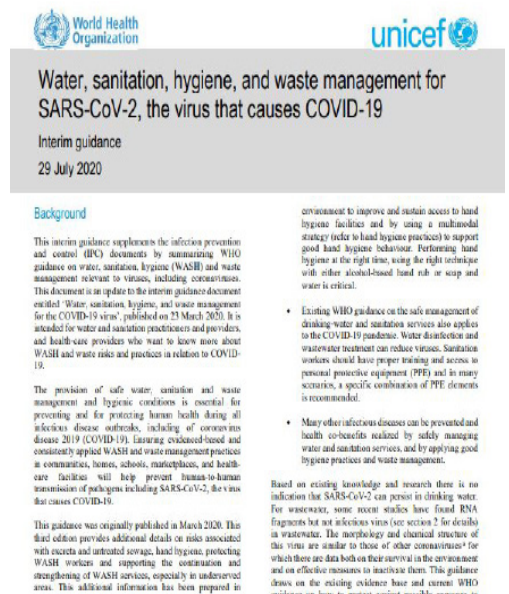
To read to full report, check the [link](#)

### UNHCR RESPONSE TO COVID-19 IN LEBANON\_AS OF SEPTEMBER 2020

Since the COVID-19 outbreak in Lebanon, UNHCR has been conducting collective efforts to prevent and contain the transmission of the virus to avoid overstretching of the health system.

The support to hospitals will cover 800 additional beds and 100 additional ICU beds in total, including ventilators and other advanced equipment, as well as medicine stocks. Since February, UNHCR teams deployed all efforts to build dedicated hospital expansion facilities or rehabilitate existing unused sections and refurbish them with new medical equipment. The latter will remain the property of the hospitals after the pandemic, with the aim to cure many more patients long after COVID-19.

To know more about the UNHCR response to COVID-19 in Lebanon, check the [link](#)



## UPCOMING EVENTS IN LEBANON

Training on Sustainable Sanitation and Water Management with special focus on faecal sludge management - conducted by cewas Middle East and LEWAP (23-28 November 2020)

Technical and Training Workshop on «Towards Integrated Local Watershed Management» - conducted by BTVL and LEWAP/pS-Eau (8-9 December 2020)

Water Trucking and Desludging Market Study Presentation - conducted by UPLoAD and Solidarité International (TBD - 2020)

.....

THIS NEWSLETTER IS PUBLISHED BY LEWAP, CREATED UPON THE INITIATIVE OF PS-EAU, WITH THE SUPPORT OF THE RHONE AND MEDITERRANEAN CORSICA AGENCY AND THE AGENCE FRANÇAISE DE DÉVELOPPEMENT.

### Contribute to LEWAP!

This newsletter has been published in order to keep you informed about the updates in the water sector. The newsletter can be enriched by your contributions... Do not hesitate to communicate to us any information which are likely to be interest to other members in the network!

[contact@lewap.org](mailto:contact@lewap.org)