



WHAT IS HAPPENING IN THE NETWORK?

WASH SECTOR SITUATION IN THE CONTEXT OF THE CORONAVIRUS EPIDEMIC

On 30 January, the World Health Organization declared the 2019 coronavirus disease (COVID-19) outbreak a public health emergency of international concern. In Lebanon, on 21 February 2020, the first case of COVID-19 was confirmed and since then the government has been working on containing the virus by setting movement restrictions.

The role of the WASH Sector in response to the ongoing COVID-19 epidemics will significantly differ according to its evolution in Lebanon and the Government capacity to cover the needs. The Government has created an Inter-Ministerial COVID19 Committee that ensure the overall leadership and coordination of the response. International Organizations present in the country are coordinating through a National Task Force Lead by the Regional Coordinator and following the COVID-19 Strategic Preparedness and Response Plan.

Assistance has been provided to refugees in informal settlements and collective shelters by providing them with the necessary kits for sanitation and sterilization along with the informative measures for preparedness and response against COVID-19. Furthermore, the WASH sector have been working closely with the Disaster Risk Management Unit on locating and preparing isolation centers in their areas of intervention to help contain the virus.

As part of the project 'Remote Sensing for Water Productivity' implemented by Food and Agriculture Organization (FAO) in partnership with the International Water Management Institute (IWMI) and Lebanese Agricultural Research Institute (LARI), a virtual workshop was conducted on the 'Use of the Information Communications Technology (ICT) tools in Agriculture and Water Management in Lebanon'.

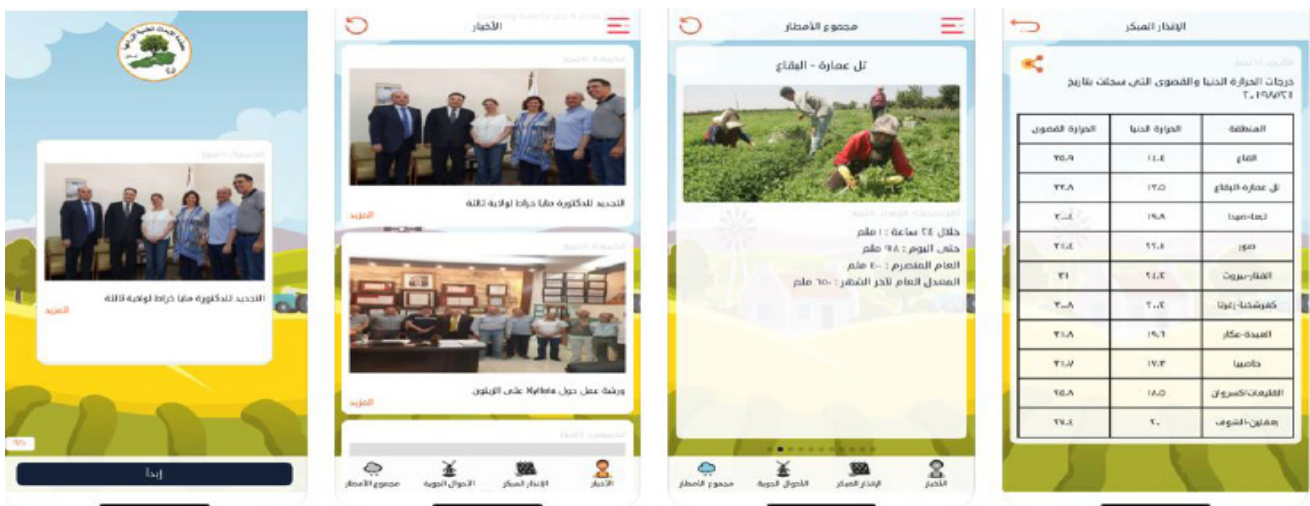
The objectives of this study consisted on:

- Identifying who is using ICT tools in Water Management and Agriculture (Public institutions, Private Sector, NGOs and users)
- Analyzing the constraints and the needs (funding, policy, know-how, usefulness, governance aspects)
- Drawing policy lessons and recommendations for public institutions, NGOs and private sector
- Identifying a specific technological solution to develop in the next phase of the project
- Identifying specific capacity building material

The workshop was repeated over the course of two days 28 and 29 April 2020; it covered the following presentations:

- [Stakeholders Mapping and Needs Assessment Study Main Findings given by Dr. Marie-Hélène Nassif \(IWMI\)](#)
- [The start of LARI LEB application given by Dr. Ihab Jomaa \(LARI\)](#)
- [The upgrade of LARI LEB application given by Dr. Marie Thérèse Abi-Saab \(LARI\)](#)

To install the LARI LEB app presented in this workshop, click here for [Android users](#) and here for [iOS users](#).



BERYTECH CLEAN TECHNOLOGY LEARNING SERIES

Since beginning April 2020, Berytech is conducting weekly webinars - every Tuesday afternoon - to discuss the challenges faced in three main sectors: Solid Waste Management, Water and Wastewater Management and Renewable Energy.

These series included the intervention of experts alongside successful entrepreneurs in each of the three sectors. Below is the list of panelists along with the link to each webinar.

WEBINAR	SPEAKER	SECTOR
Webinar 1	Ziad Abi Chaker, CEO at Cedar Environmental L.L.C .	Solid Waste Management
	Salah Saliba, Private Sector Engagement Team Lead on the USAID-funded Lebanon Water Project (LWP) at DAI	Water and Wastewater
	Marc Aoun, founder and CEO of CubeX SAL	Water and Wastewater
	Hassan Hraïli, Project Manager of the UNDP-CEDRO project	Renewable Energy
Webinar 2	Dr. Dominique Salameh, Head of Continuous Learning and Training Department and Doctoral Programs at the Faculty of Sciences of Saint Joseph University	Solid Waste Management
	Khoder Eid, founder of Green Track	Solid Waste Management
	Hussam Hawwa, founder and CEO of Difaf	Water and Wastewater
	Jules Hatem, founder and Managing Director of Triple E	Water and Wastewater
	Jessica Obeid, Energy Consultant and Academy Associate at Chatham House	Renewable Energy
Webinar 3	Jad Bsaiibes, Co-founder of Green Power Generation	Renewable Energy
	Shada El-Sharif, Advisor and Consultant in Sustainability & Climate Change in Jordan	Solid Waste Management
	Georges Bitar, founder of Live Love Recycle	Solid Waste Management
	Dr. Nadim Farajalla, Director of the Climate Change and the Environment Program at the American University of Beirut's Issam Fares Institute for Public Policy and International Affairs	Water and Wastewater
	Baker Bozeyeh, Founder of FlowLess Smart Water Solutions	Water and Wastewater
	Walid El Baba, MD of WEBCO and President of the Lebanese Solar Energy Society Board	Renewable Energy
	Ryme Asaad, co-founder and managing Director at Rise2030, MyioLab and Kapstone Co.	Renewable Energy
Webinar 5	Dr. Najat Aoun Saliba, Director at the Nature Conservation Center - American University of Beirut	Solid Waste Management
	Anwar Al Shami - Lead Environmental Engineer at the Nature Conservation Center - American University of Beirut	Solid Waste Management
Webinar 6	Aya Issa, Board member and Group Projects Coordinator at IPT	Renewable Energy
	Rani Al Achkar – Director, Engineering and Planning at Lebanese Center for Energy Conservation (LCEC)	Renewable Energy

WEBINAR	SPEAKER	SECTOR
Webinar 7	Nassim Abou-Hamad –Head of Water Governance and Basin Management Department at Litani River Authority (LRA)	Water and Wastewater
	Sara Dia, Water Innovation Lab Program Coordinator at Waterlution	Water and Wastewater

PROJECTS NEWS

LAUNCH OF THE NEW INTERACTIVE ONLINE PLATFORM OF THE COMPENDIUM OF SANITATION TECHNOLOGIES IN EMERGENCIES.

The [German WASH network](#) launched the Beta version (that will be continuously improved) of the eCompendium of Sanitation Technologies in Emergencies.

This online interactive platform is user-friendly that aims to improve and enables decision making through realtime filtering and configuration of entire sanitation and fecal sludge management service chain solutions in emergency settings.

It is a systematic compilation of all relevant emergency sanitation technologies; It disaggregates the sanitation service chain into their functional components, defines key terminology and provides concise information on key decision criteria for a wide range of emergency sanitation technologies and related cross-cutting issues.



This tool addresses a broad spectrum of scenarios that humanitarian WASH practitioners may encounter when planning, implementing and operating appropriate sanitation services, covering technologies suitable from the acute response over the stabilisation up to the recovery phase.

The eCompendium mainly targets humanitarian field workers, local first responders, engineers, planners, relevant government representatives, academic institutions, capacity building agencies and WASH professionals involved in humanitarian WASH response and subsequent stabilisation and recovery activities.

All of the information and graphics are open-source and free of charge, to access the eCompendium check the [link](#).

LATEST PUBLICATIONS

IWMI - MENA REGION LAUNCHES THEIR FIRST NEWSLETTER

On April 24, 2020, the International Water Management Institute (IWMI) launched their first electronic quarterly newsletter which covers the institute's latest achievements and the new opportunities for collaboration.

To know more about IWMI's latest projects, check the [link](#)

THE IMPACT OF COVID-19 ON THE WATER SCARCE ARAB REGION - UNESCWA

The United Nations Economic and Social Commission for Western Asia (UNESCWA) published a policy brief on the impact of COVID-19 on the water scarce Arab region.

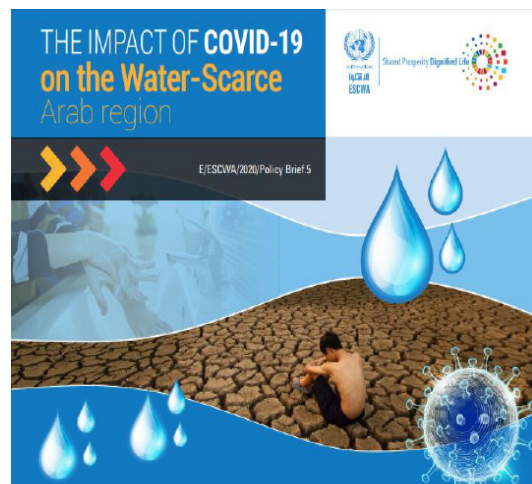
The impact assessment of COVID-19 showed an increased demand of water for handwashing hence increasing by an average of 5% the consumption of water per household.

Vulnerable communities are at risk due to the lack of access to basic handwashing facilities, more exposure when collecting water for their households.

Water and sanitation service providers are under increased pressure to continue providing safely managed water and sanitation services, with increased demand for materials, restricted movement of staff, and reduced cost recovery. Moreover, increased consumption of water associated with cleaning and disinfecting materials increased domestic wastewater that needs to be treated properly; some countries have limited wastewater treatment and wastewater capacities are already insufficient in many countries

Water stress may also rise due to the allocation of water resources to the local agricultural sector to respond an expected decrease of imports from food productive countries due to the global crisis.

The recommendations proposed by UNESCWA can be found on the [link](#)



Many challenges arose facing Lebanese municipalities in the last couple of years. With the already complex urban environment, weak governance, political instability and refugee influx, the global pandemic COVID-19 added further challenges to local authorities in responding to large scale emergencies or plan for the future. Therefore, UN-Habitat has conducted a rapid assessment of union of municipalities response to COVID-19 between April and May 2020.

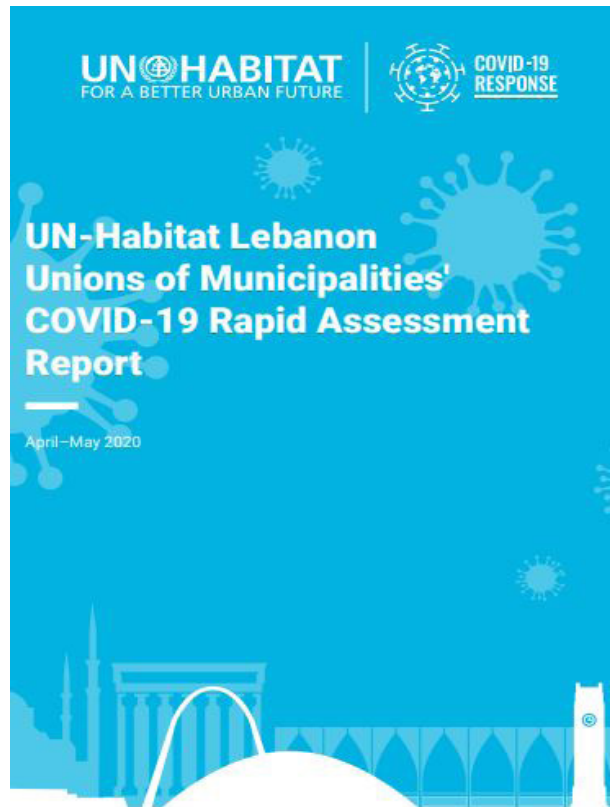
The aim of the rapid assessment was to obtain baseline information and data concerning the COVID-19 response at the local level, to establish a comprehensive strategy for COVID-19 support in these same areas.

The assessment involved 34 unions of municipalities that cover 548 municipalities, in addition to 5 individual municipalities in the main cities: Baalbeck, Bcharre, Bourj Hammoud, Nabatiyeh, and Tripoli. The selection of the unions and municipalities was based on a combination of the size of the unions and their exposure to COVID-19 at the time of selection; unions containing a number of vulnerable municipalities experiencing COVID-19 cases were selected.

The main challenges that prevented local authorities from fully protecting their communities from COVID-19 were determined in this assessment as per below:

- The pre-existing poor urban basic services provision – such as water, sanitation, and solid waste management and disposal – particularly in urban dense neighbourhoods
- The rising tensions and violence among vulnerable populations, including between host and refugee communities.
- The need to strengthening the financial and administrative capacity of local authorities
- The severe cumulative impact on the livelihoods of already vulnerable Lebanese and refugee communities
- The absence of adequate and affordable housing and shelter options in Lebanon, for both vulnerable Lebanese and refugee communities

The assessment identified more than 80 urgent interventions related to five main sectors: establishment of isolation centres, water and sanitation, medical solid waste, livelihoods, and awareness raising on the use of protection materials and supplies and on adequate hygiene.



• To know more about this assessment, check the [full report](#)

STATE SPACES IN LEBANON. A WATER AND WASTEWATER POLICIES ANALYSIS - THESIS BY CHRISTÈLE ALLÈS

As part of the geography department at the university of Nantes in France, Christèle Allès published in May 2020 her thesis on 'State Spaces in Lebanon. A Water and Wastewater Policies Analysis'.

This research aims to mobilize the tools of geography to take a new look at the Lebanese State by analyze the spatiality of its construction and its evolution through the observation of public drinking water services and sanitation, and in particular the policies that govern its development and organization mainly the water sector reform undertaken since 2000.

To know more about the outcome of this research, check the [link](#) (available in French only)

UPCOMING EVENTS IN LEBANON

The third edition of the AMWAJ Forum will take place in Beirut from 7-9 October 2020 in partnership with the [Lebanese Center for Energy Conservation](#) in the framework of the [World Energy Council's World Energy Week 2020](#) in Beirut.

[AMWAJ](#) is collaborating with [SUGi](#) and [theOtherDada](#) to plant trees in the Beirut Urban Forest in Sin El-Fil during the AMWAJ forum 2020. Stay tuned on [LinkedIn](#) [Facebook](#) [Twitter](#) for more details

THIS NEWSLETTER IS PUBLISHED BY LEWAP, CREATED UPON THE INITIATIVE OF PS-EAU, WITH THE SUPPORT OF THE RHONE AND MEDITERRANEAN CORSICA AGENCY AND THE AGENCE FRANÇAISE DE DÉVELOPPEMENT.

Contribute to LEWAP!

This newsletter has been published in order to keep you informed about the updates in the water sector. The newsletter can be enriched by your contributions...

Do not hesitate to communicate to us any information which are likely to be interest to other members in the network!

contact@lewap.org