

Participatory River Basin approaches in Lebanon



How we make it work



What does participatory look like



Municipalities



Authorities

Decision makers



Academia



Private sector, community



NGO, Civil Society



HawkaMaa - EU
حوكماء - الإتحاد الأوروبي

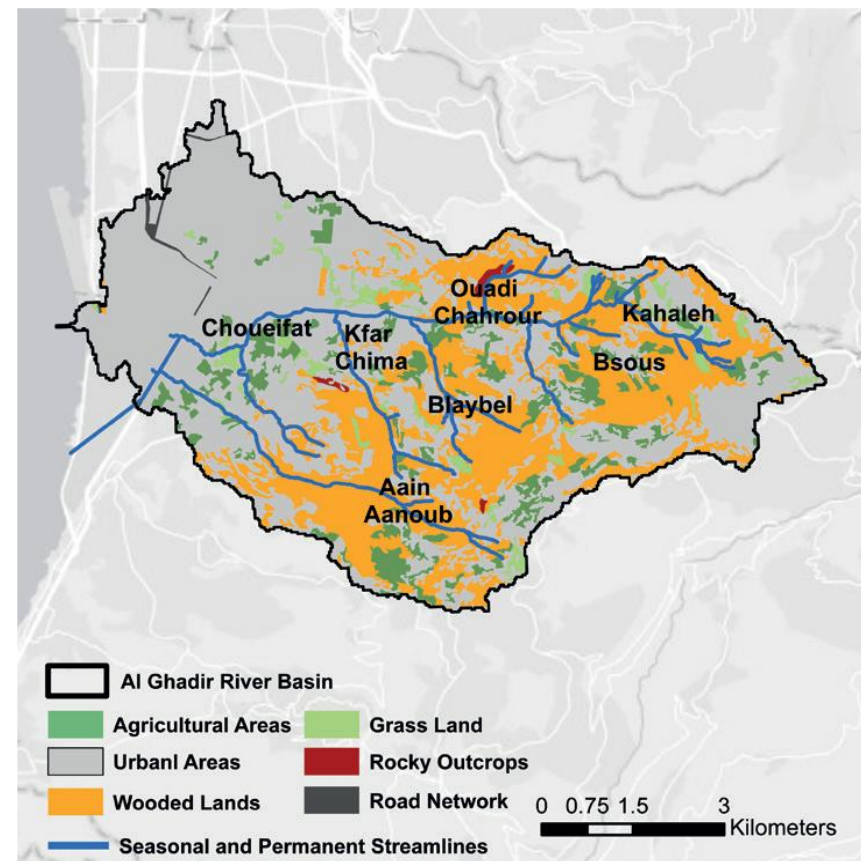
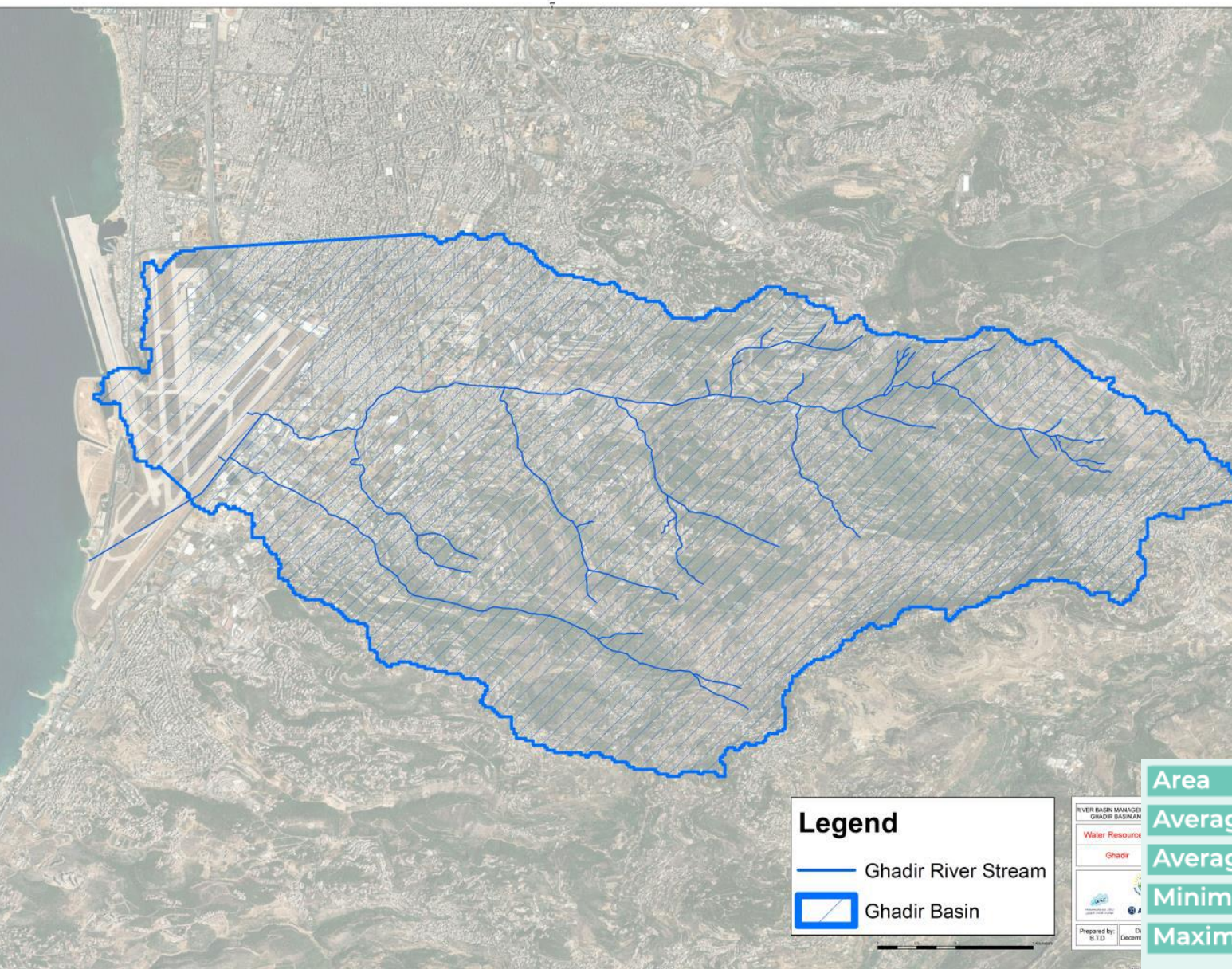


Funded by the European Union
بتمويل من الإتحاد الأوروبي



acted

Ghadir River Basin



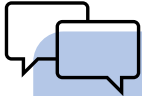
Area	40 km ²
Average Annual Run-off	0.39 m ³ /s
Average Precipitation	728mm
Minimum Temperature	8.5 °C
Maximum Temperature	15 °C

TIMELINE

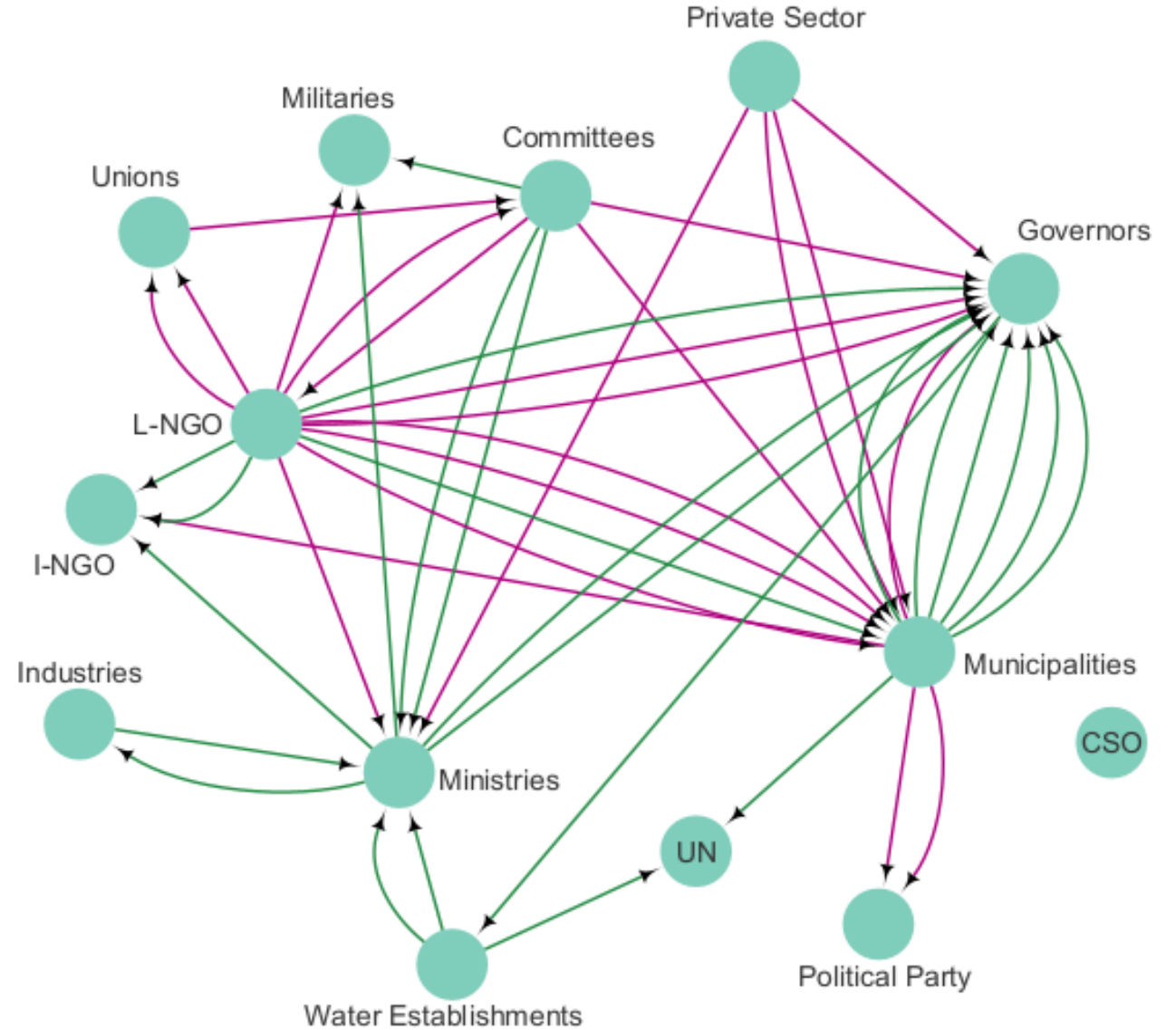
**Stakeholder
identification**



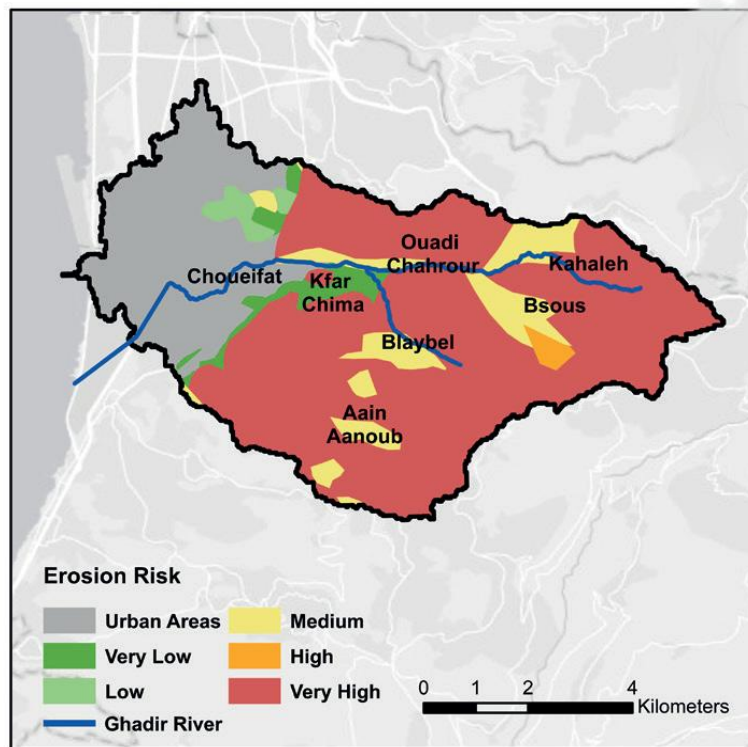
**Mapping of
interactions**



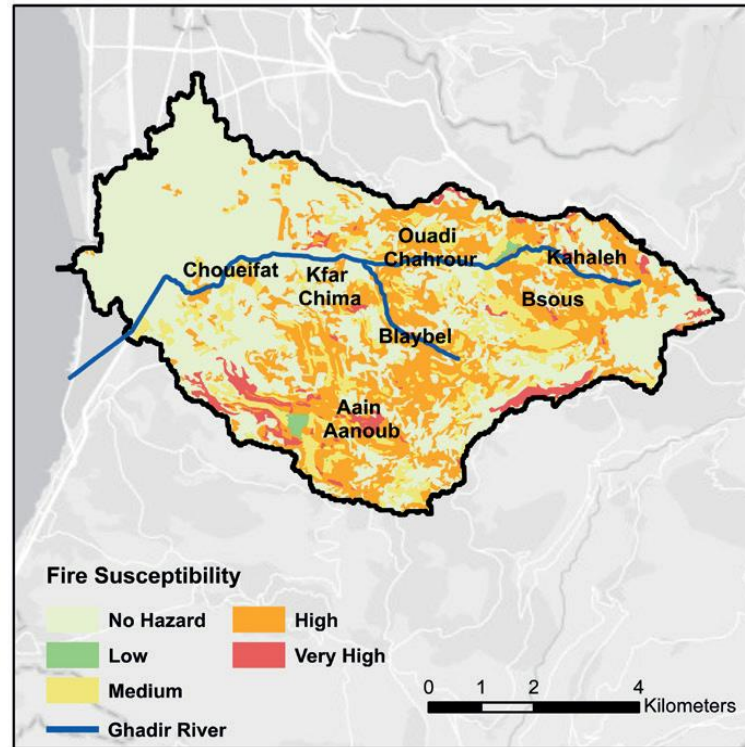
Baseline reports



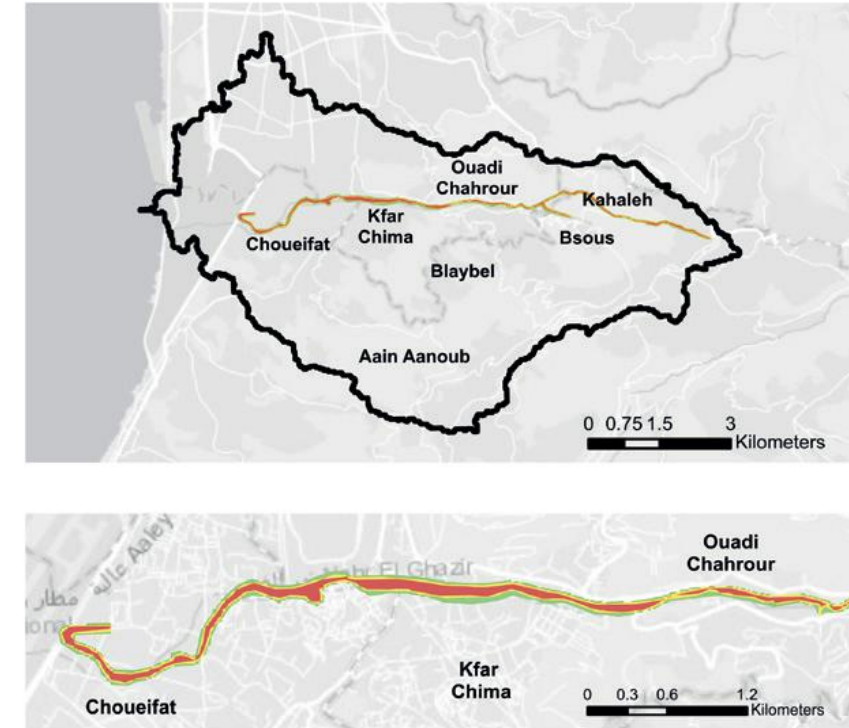
Erosion Risk



Fire Susceptibility



River Flood Map





HawkaMaa - EU
حوكماء - الإتحاد الأوروبي

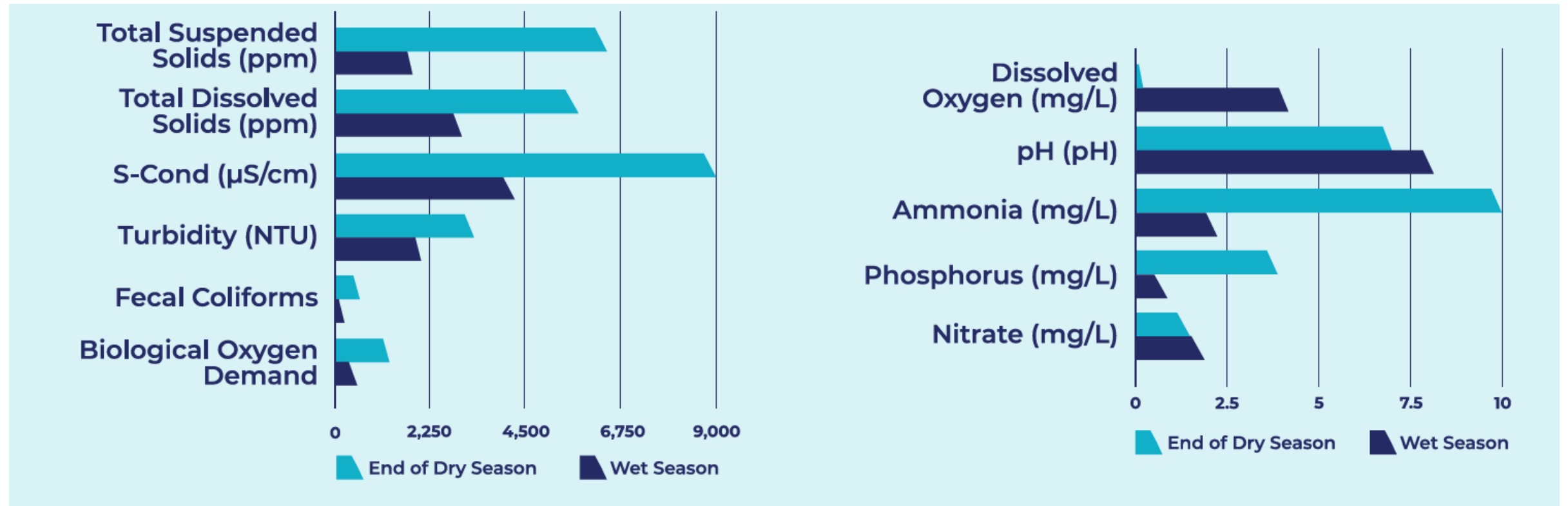


Funded by the European Union
بتمويل من الإتحاد الأوروبي



acted

Baseline Report – Water quality





HawkaMaa - EU
حوكماء - الإتحاد الأوروبي



Funded by the European Union
بتمويل من الاتحاد الأوروبي



acted

TIMELINE


**Consultations
workshops**



**Water model
reports**


Final Workshops





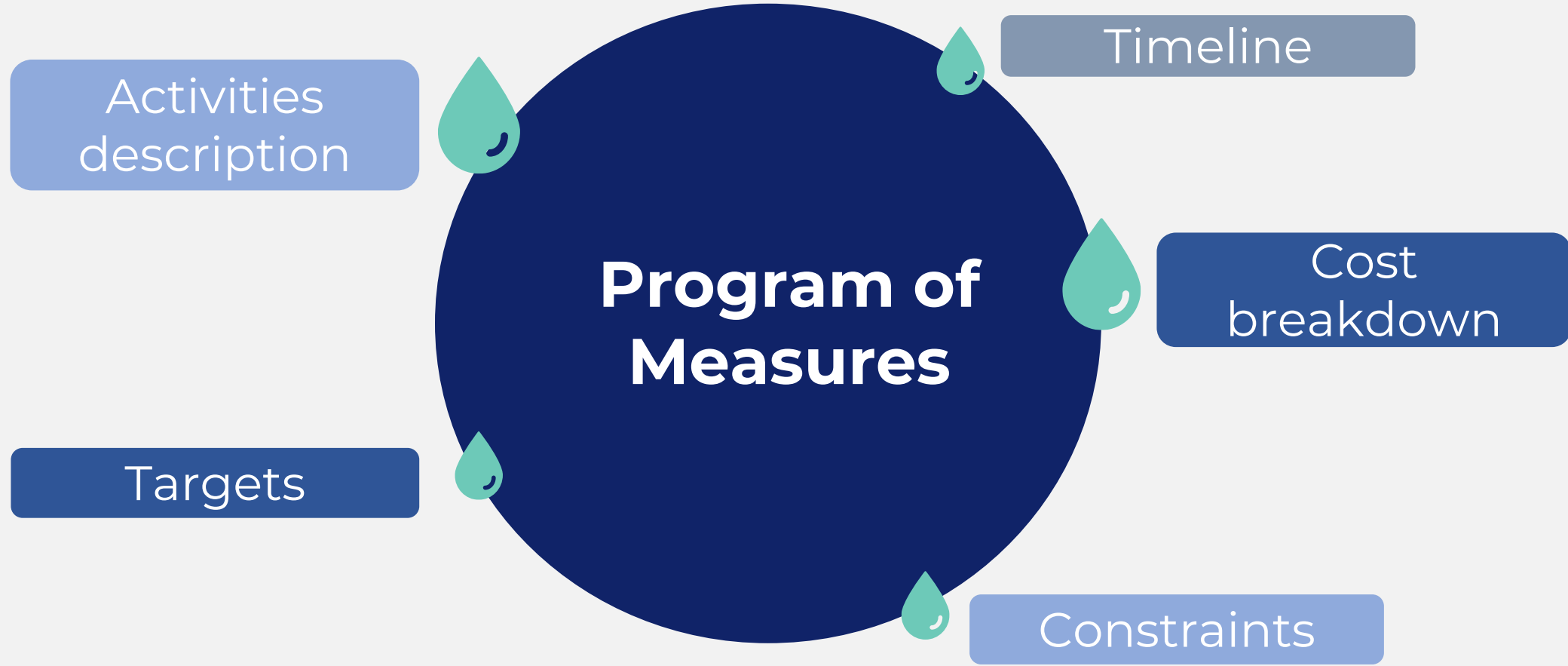
HawkaMaa - EU
حوكماء - الإتحاد الأوروبي



Funded by the European Union
بتمويل من الإتحاد الأوروبي



acted



Rainwater Harvesting

Improved climate
security

Save 7% of eclectic
energy used to
pump water

Saving approx.
25% of annual cost
of water for farmer





HawkaMaa - EU
حوكماء - الإتحاد الأوروبي



Funded by the European Union
بتمويل من الاتحاد الأوروبي



acted

Citizen leadership



**Water
consumption
practices**

**Future
Water
leaders**

**Interactive
learning**





HawkaMaa - EU
حوكماء - الإتحاد الأوروبي



Funded by the European Union
بتمويل من الإتحاد الأوروبي



acted



Thank you